

Supplementary Material V: Additional Economic Figures

Figure 27. Cost-effectiveness planes (top graphs) and cost-effectiveness acceptability curves (bottom graphs) **excluding the total cost outliers**, not adjusted, and adjusted for baseline utility and costs, demographics, and site effects, at 12 months (completed cases).

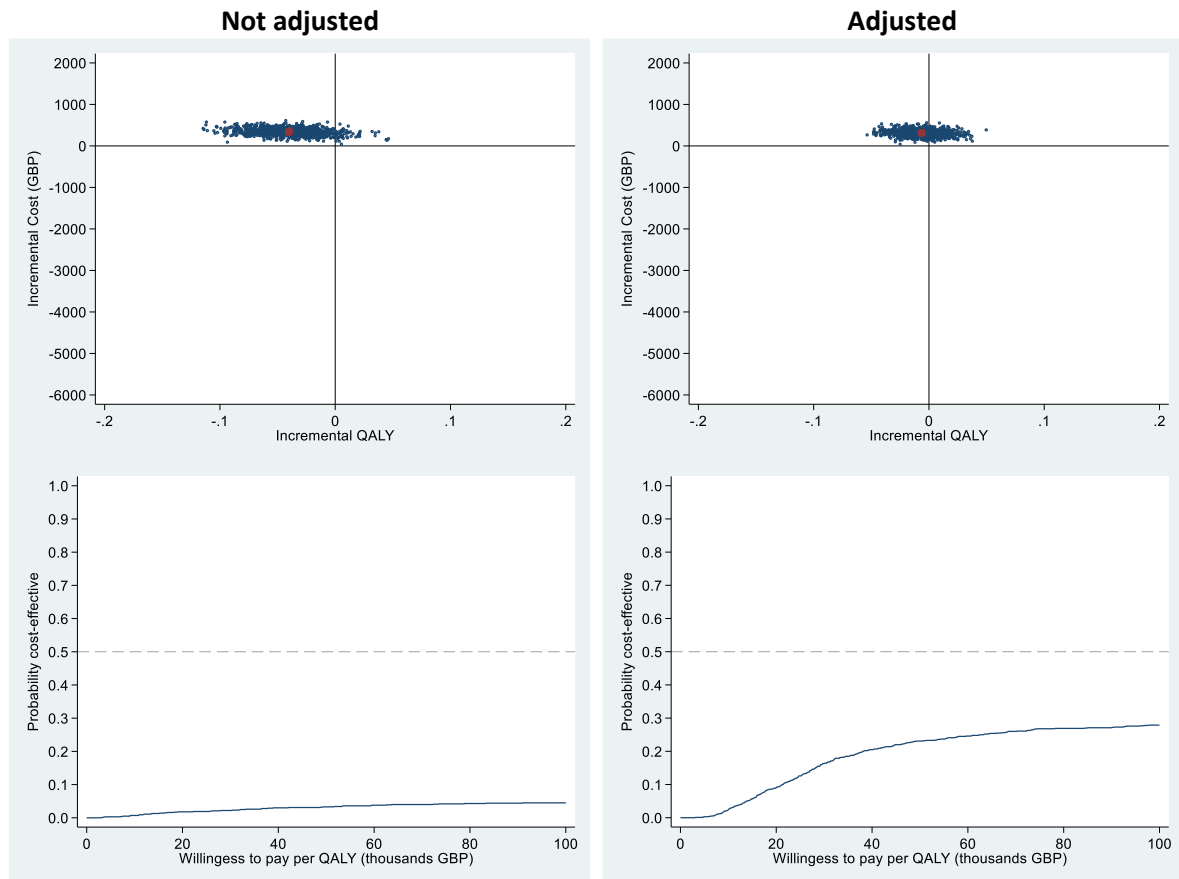


Figure 28 Cost-effectiveness planes (top graphs) and cost-effectiveness acceptability curves (bottom graphs) **replacing the cost of intervention** which varies across participants according to actual attendance of the individual and group sessions **with the fixed intervention cost**, not adjusted and adjusted for baseline utility and costs, demographics, and site effects, at 12 months (completed cases).

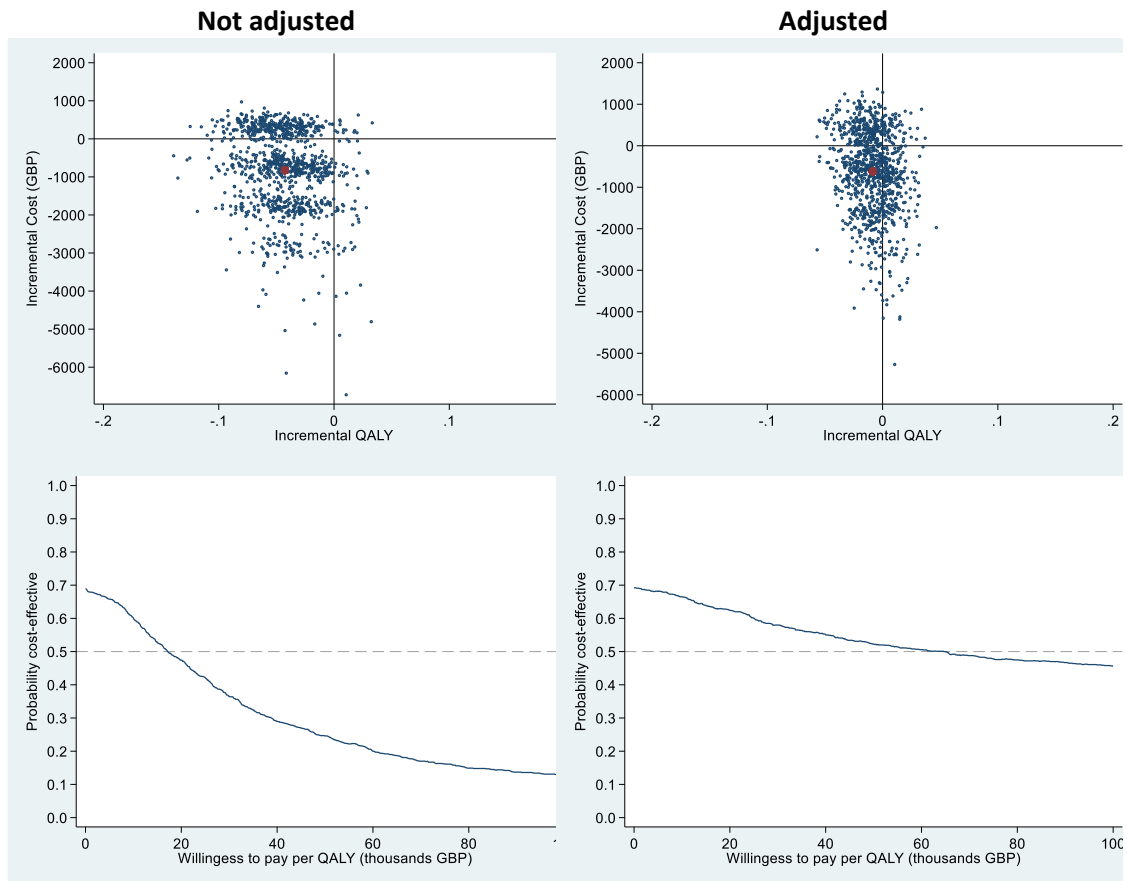


Figure 29. Cost-effectiveness planes (top graphs) and cost-effectiveness acceptability curves (bottom graphs) with the **cost of training spread over six cohorts of participants per year**, not adjusted and adjusted for baseline utility and costs, demographics, and site effects, at 12 months (completed cases).

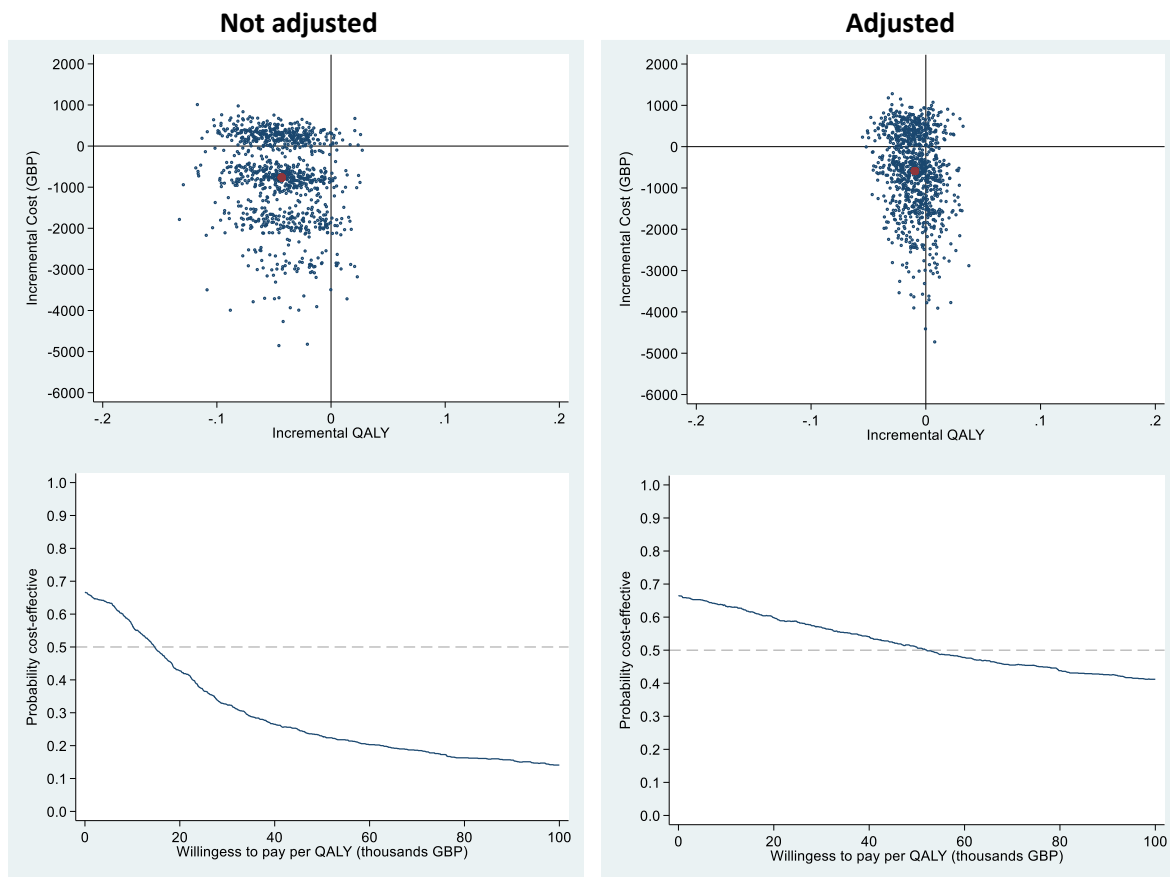


Figure 30. Cost-effectiveness planes (top graphs) and cost-effectiveness acceptability curves (bottom graphs) with QALY derived from the CHU-9D measure, adjusted for baseline utility and costs, demographics, and site effects, at 12 months (completed cases).

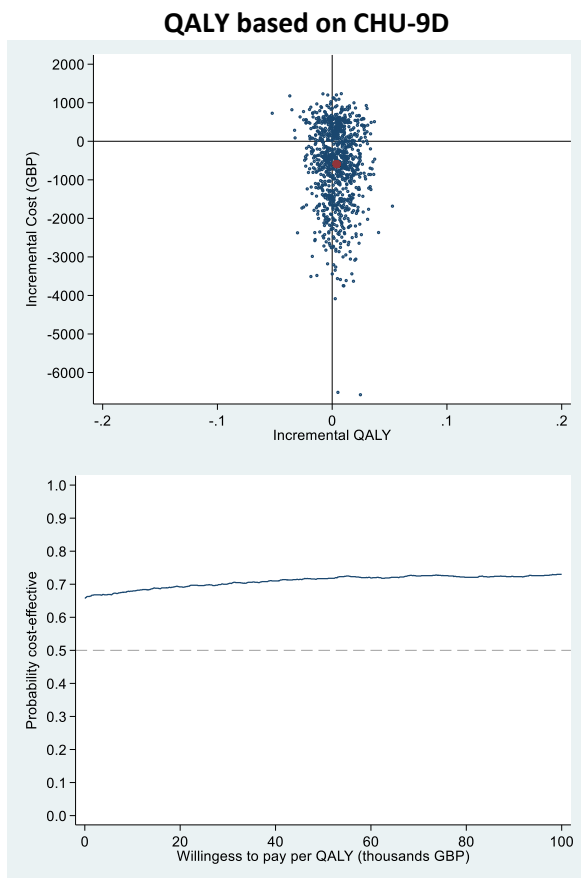


Figure 31. Cost-effectiveness planes (top graphs) and cost-effectiveness acceptability curves (bottom graphs) on the sample that excludes cost outliers, not adjusted, and adjusted for baseline utility and costs, demographics, and site effects, at 12 months (completed cases).

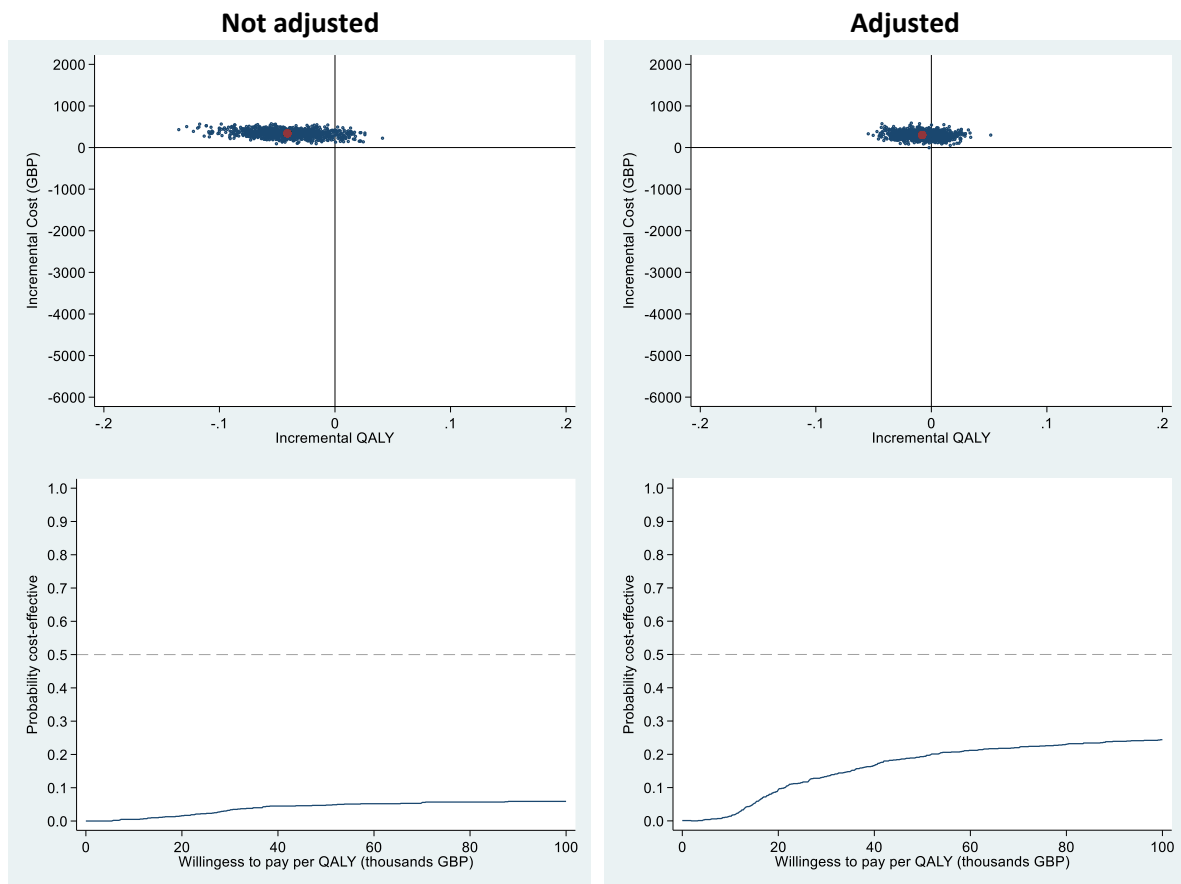


Figure 32. Sensitivity analysis excluding outliers: Cost-effectiveness planes (top graph), and cost-effectiveness acceptability curves (bottom graph), all adjusted for baseline utility and costs, at 12 months, MAR multiple imputations (scenario 1), and sensitivity for MNAR (scenarios 2-7). MNAR scenarios are defined by the four parameters, which represent multiplicative factors to change the imputed parameter to reflect missing not at random possibility. The outcomes in the order of appearance are QALY for the control group, QALY for the treatment group, total cost for the control group, the total cost for the treatment group.

