

Figure S2 Panel A: As treated analysis 2 or more arterial grafts versus single arterial graft (mortality). Reproduced from: Taggart, David P et al. “Bilateral versus Single Internal-Thoracic-Artery Grafts at 10 Years.” The New England journal of medicine vol. 380,5 (2019): 437-446. doi:10.1056/NEJMoa1808783.

Adjusted Hazard Ratio 0.81; 95% Confidence Interval 0.69-0.95

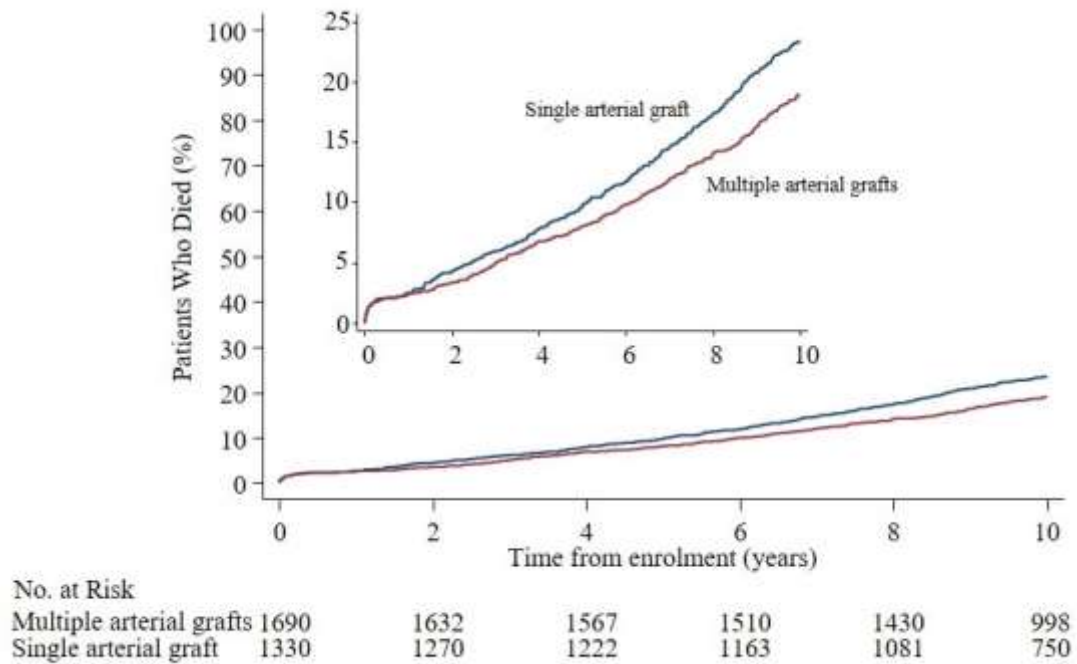


Figure S2 Panel B: As treated analysis. 2 or more arterial grafts versus single arterial graft (all-cause mortality, myocardial infarction or stroke).
 Reproduced from: Taggart, David P et al. "Bilateral versus Single Internal-Thoracic-Artery Grafts at 10 Years." The New England journal of medicine vol. 380,5 (2019): 437-446. doi:10.1056/NEJMoa1808783.

Adjusted Hazard Ratio 0.80 95% Confidence Interval 0.68-0.93

