



# CHESS

Chronic Headache Education  
and Self-management Study

T  
E  
M

## **PLATE TABLES AND FIGURES**

### **Migraine and Tension Type Headache**

Version: 2.0

Migraine & T

# Contents

<b>SECTION 1 - SCREENING THROUGH TO RANDOMISATION</b> .....	4
<b>SECTION 2 - PARTICIPANT BASELINE AND DEMOGRAPHIC DATA</b> .....	7
<b>SECTION 3 - PARTICIPANT FOLLOW-UP</b> .....	17
<b>SECTION 4 - INTERVENTION DATA</b> .....	20
<b>SECTION 5 - STUDY OUTCOME DATA</b> .....	23
<b>SECTION 6 - ADVERSE EVENTS AND SERIOUS ADVERSE EVENTS</b> .....	56

*Drug use data are not included in this report. Such data, in a mixed population of people with chronic migraine and chronic tension type headache, would be difficult to interpret as different drug use outcomes might be considered beneficial in the classification groups.*

*Table numbers are non-sequential to match table numbers in statistical report for the primary analysis.*

---

## **List of Tables**

Table 3: Number and percentage of participants randomised to standard care and self-management by geographical location.....	6
Table 4: Number and percentage of participants with different headache types by treatment .....	6
Table 5: Baseline demographic characteristics of all randomised participants by treatment group .....	8
Table 6: Baseline outcome measures by treatment arm .....	11
Table 7: Baseline outcome measures summarised by headache type .....	13
Table 8: Baseline pain grid summarised for participants in the standard care arm .....	15
Table 9: Baseline pain grid summarised for participants in the self-management arm .....	16
Table 10: Overall summary of withdrawals requests by treatment arm* .....	18
Table 12: Time from randomisation to withdrawal and follow-up summarised by treatment arm .....	19
Table 13: Summary of intervention data .....	21
Table 14: Study outcomes at 4 months follow-up.....	24
Table 15: Study outcomes at 8 months follow-up.....	27
Table 16: Study outcomes at 12 months follow-up.....	30
Table 17: General health outcomes at 4 months follow-up.....	33
Table 18: General health outcomes at 8 months follow-up.....	36
Table 19: General health outcomes at 12 months follow-up.....	38
Table 20: Baseline demographic characteristics of randomised participants summarised by compliance status (minimum compliance).....	40
Table 21: Baseline outcome measures of randomised participants summarised by compliance status (minimum compliance).....	47
Table 22: Intention To Treat (ITT) and Complier Averaged Causal Effect (CACE) model estimates of treatment difference at each time point .....	52
Table 23: Sub-group analyses of the 12-month HIT-6 outcome.....	53
Table 24: Treatment effectiveness estimates for the primary outcome (HIT-6 at 12 months) for each of the headache types.....	54
Table 25: Sensitivity analysis - treatment effectiveness estimate based on the primary outcome (at 12-month follow-up) having excluded those participants included in the process evaluation interviews.....	55
Table 26: Sensitivity analysis - treatment effectiveness estimate based on the primary outcome (at 12-month follow-up) having excluded those participants reporting less than 15 days of headache at baseline .....	55
Table 27: Adverse events (AE) and serious adverse events (SAE) summarised by treatment group .....	57
Table 28: Assessment of SAEs summarised by treatment group .....	57

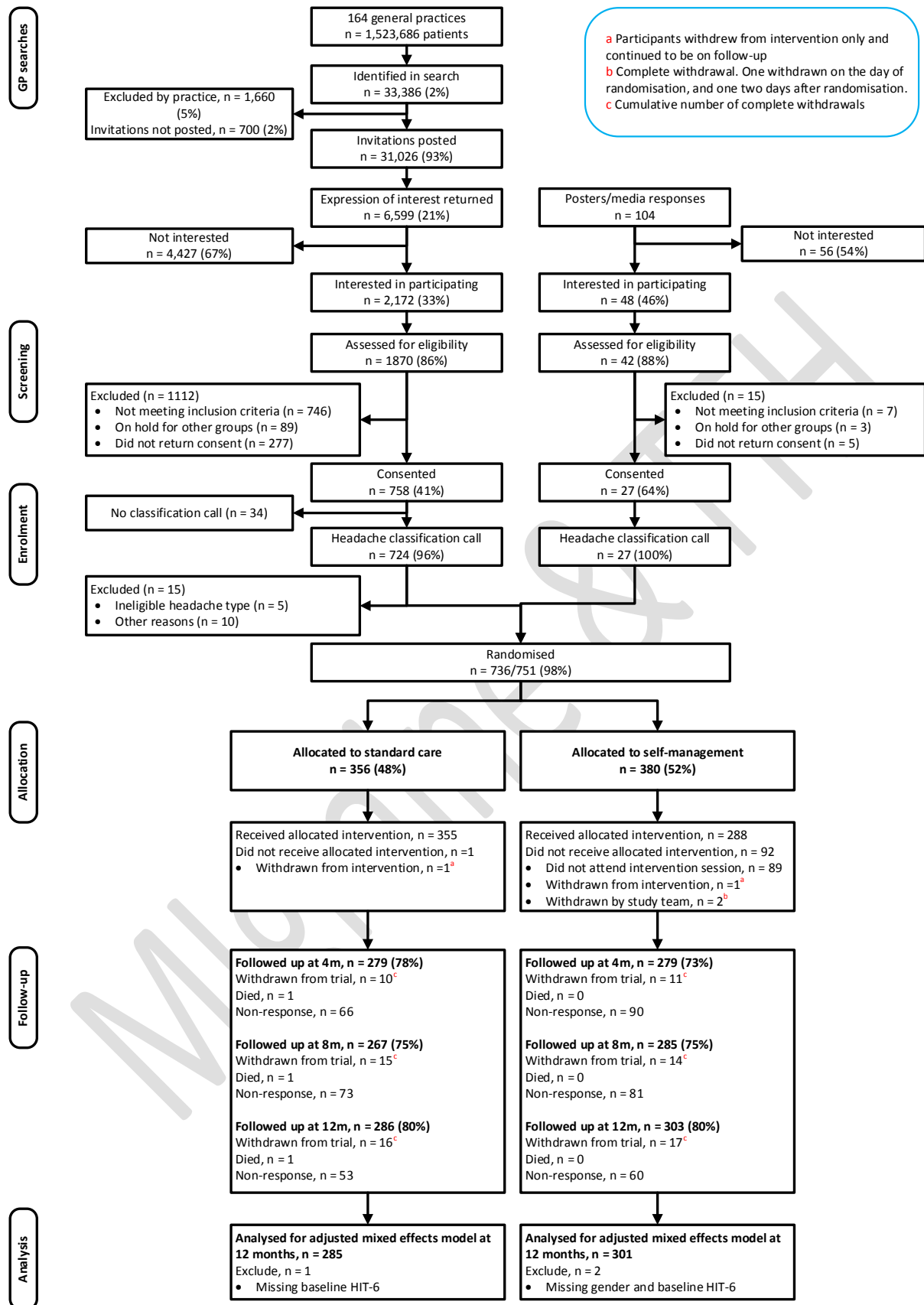
## **List of Figures**

Figure 1: CONSORT diagram .....	5
Figure 2: Intervention attendance flow diagram.....	22
Figure 3: Plot of HIT-6 (Primary outcome) over time by treatment group.....	33
Figure 4: Plot of HIT-6 (Primary outcome) over time by headache type and treatment group.....	33

**SECTION 1 - SCREENING THROUGH TO RANDOMISATION**

Migraine & TTH

**Figure 1: CONSORT diagram**



***Table 1: Number and percentage of participants randomised to standard care and self-management by geographical location***

	Standard care	Self-management	Total
Midlands	249 (48.4%)	266 (51.6%)	515
Greater London	107 (48.4%)	114 (51.6%)	221
<b>TOTAL:</b>	356	380	736

***Table 2: Number and percentage of participants with different headache types by treatment***

	Standard care	Self-management
Definite chronic migraine – with MOH	122 (48.2%)	131 (51.8%)
Probable chronic migraine – with MOH	74 (48.1%)	80 (51.9%)
Chronic tension type headache – with MOH	2 (66.7%)	1 (33.3%)
Definite chronic migraine – without MOH	69 (48.2%)	74 (51.8%)
Probable chronic migraine – without MOH	86 (48.6%)	91 (51.4%)
Chronic tension type headache – without MOH	3 (50.0%)	3 (50.0%)
<b>TOTAL:</b>	356 (48.4%)	380 (51.6%)

**SECTION 2 - PARTICIPANT BASELINE AND DEMOGRAPHIC  
DATA**

Migraine & TTH

**Table 3: Baseline demographic characteristics of all randomised participants by treatment group**

	Standard care (N=356)	Self-management (N=380)	TOTAL (N=736)
<b>Age (years)</b>			
N	356	380	736
Mean (SD)	47.9 (15.0)	47.2 (15.0)	47.6 (15.0)
Median (IQR)	49 (37, 58.5)	49 (35.5, 57)	49 (36, 58)
Missing	0	0	0
<b>Gender</b>			
Male	71 (19.9%)	55 (14.5%)	126 (17.1%)
Female	285 (80.1%)	323 (85.0%)	608 (82.6%)
Missing	0	2 (0.5%)	2 (0.3%)
<b>Ethnicity</b>			
White	287 (80.6%)	308 (81.1%)	595 (80.8%)
Black or Black British	24 (6.7%)	18 (4.7%)	42 (5.7%)
Asian or Asian British	29 (8.2%)	31 (8.2%)	60 (8.2%)
Mixed	8 (2.2%)	13 (3.4%)	21 (2.8%)
Other	2 (0.6%)	6 (1.6%)	8 (1.1%)
Missing	6 (1.7%)	4 (1.0%)	10 (1.4%)
<b>Employment status</b>			
Employed	195 (54.8%)	223 (58.7%)	418 (56.8%)
Unemployed	9 (2.5%)	14 (3.7%)	23 (3.1%)
At school or full time education	10 (2.8%)	13 (3.4%)	23 (3.1%)
Unable to work due to long term sickness	36 (10.1%)	33 (8.7%)	69 (9.4%)
Looking after home/family	22 (6.2%)	22 (5.8%)	44 (6.0%)
Retired from paid work	61 (17.1%)	59 (15.5%)	120 (16.3%)
Other	16 (4.5%)	11 (2.9%)	27 (3.7%)
Missing	7 (2.0%)	5 (1.3%)	12 (1.6%)
<b>Age left full time education</b>			
Did not receive formal education	2 (0.6%)	2 (0.5%)	4 (0.5%)
Age 12 or less	3 (0.8%)	2 (0.5%)	5 (0.7%)
Age 13 to 16	94 (26.4%)	84 (22.1%)	178 (24.2%)
Age 17 to 19	93 (26.1%)	110 (29.0%)	203 (27.6%)
Age 20 or over	144 (40.5%)	163 (42.9%)	307 (41.7%)
Still in full time education	12 (3.4%)	15 (3.9%)	27 (3.7%)
Missing	8 (2.2%)	4 (1.1%)	12 (1.6%)
<b>Headache classification</b>			
Definite chronic migraine	191 (53.7%)	205 (54.0%)	396 (53.8%)



Probable chronic migraine	160 (44.9%)	171 (45.0%)	331 (45.0%)
Chronic tension type headache	5 (1.4%)	4 (1.0%)	9 (1.2%)
Missing	0	0	0
<b>Medication overuse</b>			
No	158 (44.4%)	168 (44.2%)	326 (44.3%)
Yes	198 (55.6%)	212 (55.8%)	410 (55.7%)
Missing	0	0	0
<b>Headache/migraine days over the last 4 weeks</b>			
N	354	376	730
Mean (SD)	16.4 (7.0)	16.5 (6.8)	16.4 (6.9)
Median (IQR)	16 (10, 21)	16 (12, 20)	16 (11, 20)
Missing	2	4	6
<b>Headache/migraine days over the last 4 weeks</b>			
<15	140 (39.3%)	138 (36.3%)	278 (37.8%)
≥15	214 (60.1%)	238 (62.6%)	452 (61.4%)
Missing	2 (0.6%)	4 (1.1%)	6 (0.8%)
<b>Pain killer or triptan use for headache/migraine over the last 4 weeks (days)</b>			
N	350	375	725
Mean (SD)	12.3 (7.3)	12.5 (7.5)	12.4 (7.4)
Median (IQR)	12 (8, 16)	12 (6, 17)	12 (7, 17)
Missing	6	5	11
<b>Average number of hours the headache/migraine lasted on the days they had it</b>			
N	239	258	497
Mean (SD)	10.3 (8.1)	10.4 (7.9)	10.4 (8.0)
Median (IQR)	7 (4, 15)	8 (4, 14)	7 (4, 14)
Missing	117	122	239
<b>Average severity (0-10; No pain to Extremely severe pain) on the days you had a headache/migraine</b>			
N	246	267	513

Mean (SD)	6.7 (2.0)	6.8 (1.8)	6.7 (1.9)
Median (IQR)	7 (6, 8)	7 (6, 8)	7 (6, 8)
Missing	110	113	223
<b>How fatigued were you on average in the past seven days</b>			
Not at all	4 (1.1%)	6 (1.6%)	10 (1.4%)
A little bit	44 (12.4%)	44 (11.6%)	88 (12.0%)
Somewhat	85 (23.9%)	80 (21.1%)	165 (22.4%)
Quite a bit	139 (39.0%)	147 (38.7%)	286 (38.8%)
Very much	82 (23.0%)	99 (26.0%)	181 (24.6%)
Missing	2 (0.6%)	4 (1.0%)	6 (0.8%)
<b>Sleep quality in the past seven days</b>			
Very poor	45 (12.6%)	57 (15.0%)	102 (13.9%)
Poor	115 (32.3%)	129 (34.0%)	244 (33.1%)
Fair	132 (37.1%)	135 (35.5%)	267 (36.3%)
Good	56 (15.7%)	49 (12.9%)	105 (14.3%)
Very good	7 (2.0%)	7 (1.8%)	14 (1.9%)
Missing	1 (0.3%)	3 (0.8%)	4 (0.5%)
<b>Average pain (other than headache) in the past seven days (0-10; No pain to Worst imaginable pain)</b>			
N	350	373	723
Mean (SD)	4.5 (2.8)	4.4 (2.8)	4.5 (2.8)
Median (IQR)	5 (2, 7)	4 (2, 7)	5 (2, 7)
Missing	6	7	13

**Table 4: Baseline outcome measures by treatment arm**

	Standard care (N=356)	Self-management (N=380)	TOTAL (N=736)
<b>HIT-6</b>			
N	355	378	733
Mean (SD)	64.4 (5.8)	64.3 (5.6)	64.4 (5.7)
Median (IQR)	64 (61, 68)	64 (61, 68)	64 (61, 68)
Missing	1	2	3
<b>CH-QLQ – role restrictive</b>			
N	356	378	734
Mean (SD)	54.7 (17.6)	54.7 (17.1)	54.7 (17.3)
Median (IQR)	57.1 (42.9, 66.7)	54.8 (42.9, 66.7)	54.8 (42.9, 66.7)
Missing	0	2	2
<b>CH-QLQ – role preventive</b>			
N	356	378	734
Mean (SD)	69.7 (21.3)	69.7 (20.6)	69.7 (20.9)
Median (IQR)	75 (54.2, 87.5)	70.8 (54.2, 87.5)	70.8 (54.2, 87.5)
Missing	0	2	2
<b>CH-QLQ – emotional function</b>			
N	356	377	733
Mean (SD)	57.4 (22.4)	57.2 (22.4)	57.3 (22.4)
Median (IQR)	58.3 (38.9, 77.8)	61.1 (38.9, 77.8)	61.1 (38.9, 77.8)
Missing	0	3	3
<b>SF-12 Physical</b>			
N	351	374	725
Mean (SD)	43.9 (11.0)	45.0 (10.0)	44.5 (10.5)
Median (IQR)	44.2 (36.9, 52.1)	45.9 (38.7, 52.8)	45.4 (37.6, 52.6)
Missing	5	6	11
<b>SF-12 Mental</b>			
N	352	374	726
Mean (SD)	39.7 (10.3)	39.9 (10.6)	39.8 (10.5)
Median (IQR)	39.6 (32.3, 47.2)	39.4 (32.2, 48.6)	39.5 (32.2, 47.9)
Missing	4	6	10
<b>EQ-5D</b>			
N	351	376	727
Mean (SD)	0.63 (0.25)	0.64 (0.26)	0.63 (0.25)
Median (IQR)	0.71 (0.53, 0.77)	0.72 (0.54, 0.78)	0.72 (0.53, 0.77)
Missing	5	4	9
<b>EQ-5D VAS</b>			
N	355	375	730
Mean (SD)	62.5 (19.6)	63.1 (20.5)	62.8 (20.0)
Median (IQR)	65 (50, 75)	68 (50, 80)	65 (50, 80)

	Missing	1	5	6
<b>HADS Anxiety</b>				
	N	354	377	731
	Mean (SD)	10.9 (2.7)	10.5 (2.7)	10.7 (2.7)
	Median (IQR)	11 (9, 13)	10 (9, 13)	11 (9, 13)
	Missing	2	3	5
<b>HADS Depression</b>				
	N	354	377	731
	Mean (SD)	9.0 (2.0)	9.2 (1.8)	9.1 (1.9)
	Median (IQR)	9 (8, 10)	9 (8, 10)	9 (8, 10)
	Missing	2	3	5
<b>HADS Anxiety - categorised</b>				
	0-7	34 (9.5%)	54 (14.2%)	88 (12.0%)
	8-10	118 (33.2%)	140 (36.8%)	258 (35.0%)
	11-21	202 (56.7%)	183 (48.2%)	385 (52.3%)
	Missing	2 (0.6%)	3 (0.8%)	5 (0.7%)
<b>HADS Depression - categorised</b>				
	0-7	77 (21.6%)	59 (15.5%)	136 (18.5%)
	8-10	200 (56.2%)	232 (61.1%)	432 (58.7%)
	11-21	77 (21.6%)	86 (22.6%)	163 (22.1%)
	Missing	2 (0.6%)	3 (0.8%)	5 (0.7%)
<b>PSEQ</b>				
	N	353	375	728
	Mean (SD)	33.2 (13.4)	32.8 (13.8)	33.0 (13.6)
	Median (IQR)	34 (24, 43)	34 (22, 44)	34 (23.5, 44)
	Missing	3	5	8
<b>HeiQ</b>				
	N	353	377	730
	Mean (SD)	2.8 (0.6)	2.8 (0.7)	2.8 (0.7)
	Median (IQR)	2.8 (2.4, 3.2)	3 (2.4, 3.2)	3 (2.4, 3.2)
	Missing	3	3	6

**Table 5: Baseline outcome measures summarised by headache type**

		<b>Definite chronic migraine (N=396)</b>	<b>Probable chronic migraine (N=331)</b>	<b>Chronic tension type headache (N=9)</b>
<b>HIT-6</b>				
	N	393	331	9
	Mean (SD)	66.1 (4.9)	62.6 (5.5)	53 (11.2)
	Median (IQR)	66 (63, 69)	63 (60, 66)	54 (42, 61)
	Missing	3	0	0
<b>CH-QLQ – role restrictive</b>				
	N	394	331	9
	Mean (SD)	49.7 (16.4)	60.1 (16.1)	75.1 (23.1)
	Median (IQR)	50 (38.1, 61.9)	61.9 (50, 71.4)	78.6 (69.0, 92.9)
	Missing	2	0	0
<b>CH-QLQ – role preventive</b>				
	N	394	331	9
	Mean (SD)	63.9 (21.2)	76.0 (18.4)	90.3 (19.4)
	Median (IQR)	66.7 (50, 79.2)	79.2 (66.7, 91.7)	100 (95.8, 100)
	Missing	2	0	0
<b>CH-QLQ – emotional function</b>				
	N	393	331	9
	Mean (SD)	51.9 (21.8)	63.3 (21.4)	74.7 (24.1)
	Median (IQR)	50 (33.3, 72.2)	66.7 (44.4, 83.3)	83.3 (61.1)
	Missing	3	0	0
<b>SF-12 Physical</b>				
	N	390	327	8
	Mean (SD)	42.5 (10.6)	46.5 (10.0)	54.8 (6.5)
	Median (IQR)	43.3 (36.1, 50.6)	48.5 (39.2, 54.1)	53.4 (50.9, 61.3)
	Missing	6	4	1
<b>SF-12 Mental</b>				
	N	391	327	8
	Mean (SD)	39.4 (10.4)	40.0 (10.5)	47.4 (11.1)
	Median (IQR)	39.0 (31.7, 47.1)	39.9 (32.5, 48.2)	47.8 (38.4, 57.3)
	Missing	5	4	1
<b>EQ-5D</b>				
	N	388	330	9
	Mean (SD)	0.59 (0.28)	0.67 (0.22)	0.80 (0.14)
	Median (IQR)	0.70 (0.48, 0.77)	0.74 (0.64, 0.80)	0.77 (0.72, 0.85)
	Missing	8	1	0
<b>EQ-5D VAS</b>				
	N	393	328	9
	Mean (SD)	60.5 (21.6)	65.1 (17.7)	79.7 (12.7)
	Median (IQR)	65 (42, 80)	70 (55, 75)	80 (70, 90)

	Missing	3	3	0
<b>HADS Anxiety</b>				
	N	392	330	9
	Mean (SD)	10.8 (2.8)	10.7 (2.6)	10.1 (2.7)
	Median (IQR)	11 (9, 13)	11 (9, 12)	10 (8, 11)
	Missing	4	1	0
<b>HADS Depression</b>				
	N	392	330	9
	Mean (SD)	9.2 (1.9)	9.0 (1.9)	10.1 (2.8)
	Median (IQR)	9 (8, 10)	9 (8, 10)	9 (9, 11)
	Missing	4	1	0
<b>HADS Anxiety - categorised</b>				
	0-7	50 (12.6%)	37 (11.2%)	1 (11.1%)
	8-10	131 (33.1%)	122 (36.9%)	5 (55.6%)
	11-21	211 (53.3%)	171 (51.6%)	3 (33.3%)
	Missing	4 (1.0%)	1 (0.3%)	0
<b>HADS Depression - categorised</b>				
	0-7	69 (17.4%)	66 (19.9%)	1 (11.1%)
	8-10	231 (58.3%)	197 (59.5%)	4 (44.4%)
	11-21	92 (23.3%)	67 (20.3%)	4 (44.4%)
	Missing	4 (1.0%)	1 (0.3%)	0
<b>PSEQ</b>				
	N	392	327	9
	Mean (SD)	30.0 (13.6)	36.0 (12.7)	50.7 (6.8)
	Median (IQR)	30 (20, 40)	37 (27, 45)	52 (46, 57)
	Missing	4	4	0
<b>HeiQ</b>				
	N	393	328	9
	Mean (SD)	2.7 (0.7)	2.9 (0.6)	3.2 (0.6)
	Median (IQR)	2.8 (2.2, 3.2)	3 (2.6, 3.2)	3 (3, 4)
	Missing	3	3	0

**Table 6: Baseline pain grid summarised for participants in the standard care arm**

	No pain experienced	Not at all troublesome	Slightly troublesome	Moderately troublesome	Very troublesome	Extremely troublesome
Headache	3 (0.8%)	0	29 (8.4%)	92 (26.5%)	147 (42.4%)	76 (21.9%)
Neck pain	62 (18.3%)	18 (5.3%)	65 (19.2%)	96 (28.3%)	78 (23.0%)	20 (5.9%)
Shoulder pain	92 (27.5%)	20 (6.0%)	85 (25.4%)	68 (20.4%)	51 (15.3%)	18 (5.4%)
Elbow pain	234 (72.9%)	30 (9.3%)	22 (6.9%)	22 (6.9%)	9 (2.8%)	4 (1.2%)
Wrist / hand pain	167 (51.4%)	25 (7.7%)	62 (19.1%)	34 (10.4%)	25 (7.7%)	12 (3.7%)
Chest pain	209 (65.1%)	27 (8.4%)	48 (15.0%)	22 (6.8%)	10 (3.1%)	5 (1.6%)
Abdominal pain	146 (45.1%)	29 (8.9%)	72 (22.2%)	40 (12.3%)	29 (9.0%)	8 (2.5%)
Upper back pain	151 (46.2%)	22 (6.7%)	72 (22.0%)	39 (11.9%)	33 (10.1%)	10 (3.1%)
Lower back pain	89 (26.6%)	27 (8.1%)	79 (23.6%)	56 (16.8%)	55 (16.5%)	28 (8.4%)
Hip / thigh pain	181 (55.3%)	29 (8.9%)	38 (11.6%)	35 (10.7%)	26 (8.0%)	18 (5.5%)
Knee pain	163 (50.6%)	25 (7.8%)	45 (14.0%)	37 (11.5%)	29 (9.0%)	23 (7.1%)
Ankle / foot pain	186 (56.4%)	20 (6.0%)	53 (16.1%)	34 (10.3%)	18 (5.4%)	19 (5.8%)
Other pains	184 (68.7%)	17 (6.3%)	21 (7.8%)	13 (4.9%)	18 (6.7%)	15 (5.6%)

**Table 7: Baseline pain grid summarised for participants in the self-management arm**

	No pain experienced	Not at all troublesome	Slightly troublesome	Moderately troublesome	Very troublesome	Extremely troublesome
Headache	2 (0.5%)	1 (0.3%)	23 (6.2%)	103 (27.7%)	156 (41.9%)	87 (23.4%)
Neck pain	68 (19.1%)	18 (5.1%)	86 (24.2%)	97 (27.2%)	58 (16.3%)	29 (8.1%)
Shoulder pain	97 (27.9%)	25 (7.2%)	92 (26.4%)	67 (19.2%)	42 (12.1%)	25 (7.2%)
Elbow pain	244 (73.0%)	28 (8.4%)	29 (8.7%)	21 (6.3%)	10 (3.0%)	2 (0.6%)
Wrist / hand pain	174 (51.0%)	24 (7.0%)	77 (22.6%)	35 (10.3%)	22 (6.5%)	9 (2.6%)
Chest pain	222 (66.7%)	29 (8.7%)	46 (13.8%)	19 (5.7%)	14 (4.2%)	3 (0.9%)
Abdominal pain	170 (49.8%)	36 (10.6%)	72 (21.1%)	34 (10.0%)	22 (6.5%)	7 (2.0%)
Upper back pain	153 (45.8%)	34 (10.2%)	64 (19.1%)	44 (13.2%)	26 (7.8%)	13 (3.9%)
Lower back pain	85 (24.1%)	33 (9.4%)	96 (27.3%)	66 (18.7%)	51 (14.5%)	21 (6.0%)
Hip / thigh pain	170 (50.0%)	30 (8.8%)	53 (15.6%)	49 (14.4%)	25 (7.4%)	13 (3.8%)
Knee pain	172 (49.4%)	22 (6.3%)	74 (21.3%)	38 (10.9%)	28 (8.1%)	14 (4.0%)
Ankle / foot pain	187 (55.5%)	28 (8.3%)	51 (15.1%)	38 (11.3%)	28 (8.3%)	5 (1.5%)
Other pains	193 (67.3%)	21 (7.3%)	25 (8.7%)	23 (8.0%)	14 (4.9%)	11 (3.8%)



## SECTION 3 - PARTICIPANT FOLLOW-UP

Migraine & TTH

**Table 8: Overall summary of withdrawals requests by treatment arm\***

	<b>Standard care</b>	<b>Self-management</b>	<b>TOTAL</b>
Participant withdrew from intervention package only and will be followed up	1 (0.3%)	2 (0.5%)	3 (0.4%)
Participant withdrew from study completely and will not be followed up	16 (4.5%)	15 (3.9%)	31 (4.2%)
Study team withdrew participant from study completely and will not be followed up	0	2 (0.5%)	2 (0.3%)

\* Summary of total number of withdrawal requests i.e. participants may have more than one request

Migraine & TTH

**Table 9: Time from randomisation to withdrawal and follow-up summarised by treatment arm**

	Standard care	Self-management	TOTAL
<b>Time from randomisation to withdrawing completely from trial (months)</b>			
N	16	17	33
Mean (SD)	5.6 (3.8)	5.5 (5.0)	5.6 (4.4)
Median (IQR)	4.7 (2.1, 9.1)	5.3 (0.5, 8.9)	5.2 (1.9, 8.9)
Missing time	0	0	0
<b>Time from randomisation to 4-month follow-up</b>			
N	280	280	560
Mean (SD)	4.6 (0.8)	4.5 (0.7)	4.6 (0.7)
Median (IQR)	4.4 (4.1, 4.8)	4.4 (4.1, 4.6)	4.4 (4.1, 4.7)
Missing time	0	0	0
<b>Time from randomisation to 8-month follow-up</b>			
N	268	286	554
Mean (SD)	8.7 (1.0)	8.7 (1.9)	8.7 (1.5)
Median (IQR)	8.5 (8.1, 9.0)	8.4 (8.1, 8.9)	8.5 (8.1, 9.0)
Missing time	0	0	0
<b>Time from randomisation to 12-month follow-up</b>			
N	287	306	593
Mean (SD)	13.3 (2.1)	12.9 (1.5)	13.1 (1.8)
Median (IQR)	12.6 (12.2, 13.1)	12.5 (12.2, 13.0)	12.6 (12.2, 13.1)
Missing time	0	0	0

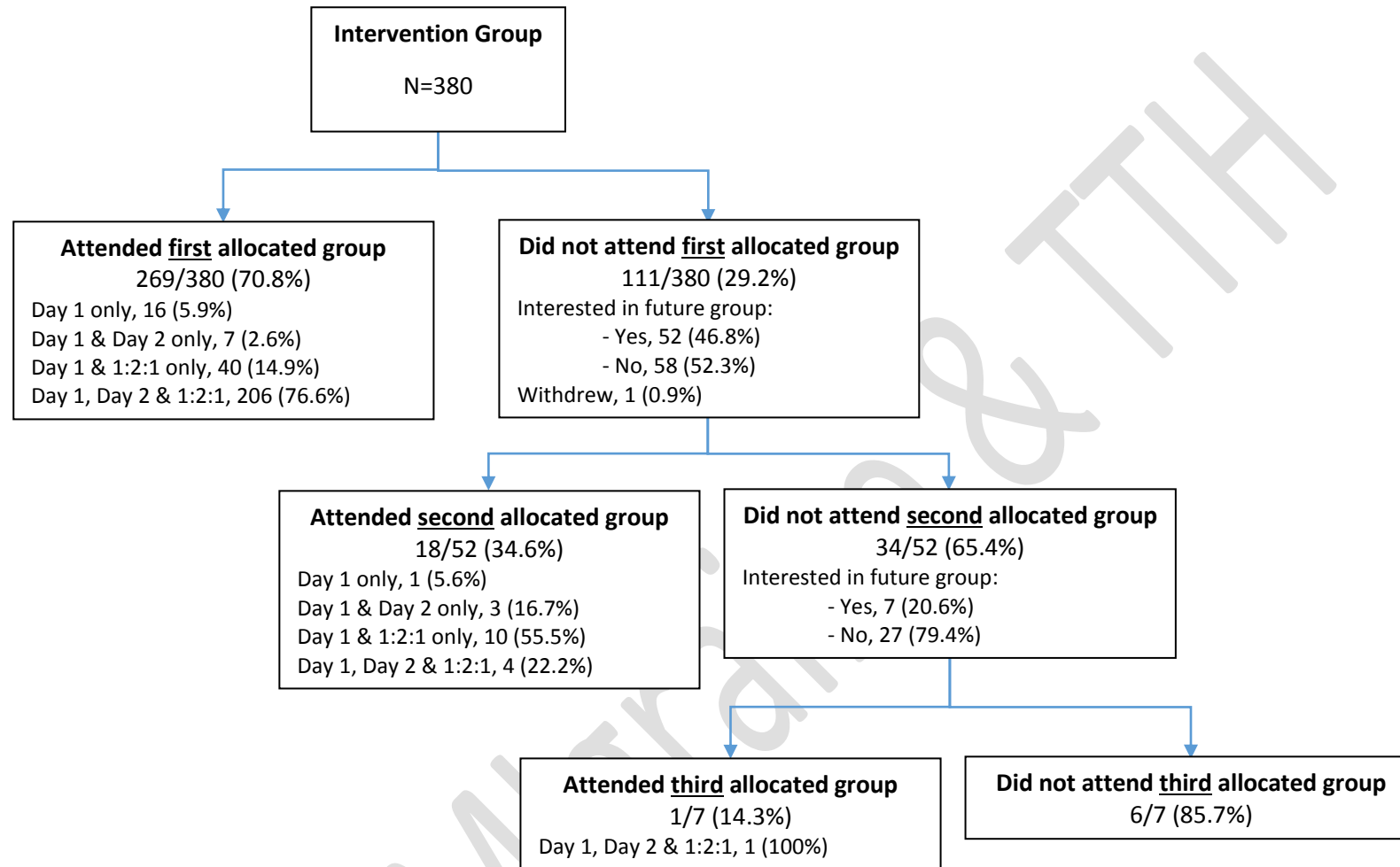
## SECTION 4 - INTERVENTION DATA

Migraine & TTH

**Table 10: Summary of intervention data**

		Self-management
<b>Time from randomisation to Session 1 (days)</b>		
	N	379
	Mean (SD)	26.8 (31.5)
	Median (IQR)	15 (11, 23)
	Missing	0
<b>Time from randomisation to Session 2 (days)</b>		
	N	379
	Mean (SD)	33.9 (32.4)
	Median (IQR)	22 (18, 30)
	Missing	0
<b>Session attendance</b>		
	Session 1 only	17 (4.5%)
	Session 1 & 2 only	10 (2.6%)
	Session 1 and one-to-one only	44 (11.6%)
	Session 1 and 2 and one-to-one	217 (57.3%)
	Did not attend session 1 (hence no other groups)	91 (24.0%)
<b>Adherence</b>		
	Minimum adherence (Session 1 and one-to-one as a minimum)	261 (68.9%)
	Full adherence (Session 1, session 2 and one-to-one)	217 (57.3%)
<b>Group size as randomised</b>		
	Number of groups	42
	Mean (SD)	9.0 (3.4)
	Median (IQR)	9 (7, 12)
	Missing	0

**Figure 2: Intervention attendance flow diagram**



## SECTION 5 - STUDY OUTCOME DATA

Migraine & TTH

**Table 11: Study outcomes at 4 months follow-up**

	Standard care	Self-management	TOTAL	Unadjusted mean difference (95% CI); p-value	Adjusted mean difference* (95% CI); p-value
<b>HIT-6</b>					
N	279	279	558	-1.3 (-2.50, -0.10); 0.034	-0.9 (-1.88, -0.004); 0.049
Mean (SD)	62.2 (7.3)	60.9 (7.2)	61.5 (7.3)		
Median (IQR)	63 (59, 66)	62 (58, 65)	62 (58, 66)		
Missing	1	1	2		
<b>CH-QLQ – role restrictive</b>					
N	247	254	501	2.6 (-0.76, 5.86); 0.131	1.5 (-0.97, 3.96); 0.234
Mean (SD)	61.8 (18.5)	64.4 (17.7)	63.1 (18.1)		
Median (IQR)	61.9 (50, 76.2)	66.7 (52.4, 76.2)	64.3 (50, 76.2)		
Missing	33	26	59		
<b>CH-QLQ – role preventive</b>					
N	247	254	501	2.5 (-1.16, 6.18); 0.180	1.6 (-0.80, 4.00); 0.191
Mean (SD)	76.1 (20.5)	78.9 (18.8)	77.5 (19.7)		
Median (IQR)	83.3 (62.5, 91.7)	83.3 (66.7, 91.7)	83.3 (66.7, 91.7)		
Missing	33	26	59		
<b>CH-QLQ – emotional function</b>					
N	247	254	501	1.9 (-2.21, 5.99); 0.366	1.2 (-1.85, 4.19); 0.447
Mean (SD)	64.9 (23.4)	66.8 (23.0)	65.9 (23.2)		
Median (IQR)	66.7 (44.4, 83.3)	72.2 (50, 88.9)	72.2 (50, 88.9)		
Missing	33	26	59		
<b>SF-12 Physical</b>					
N	245	254	499	0.2 (-1.59, 2.05);	-0.2 (-1.45, 1.07);



				0.803	0.773
Mean (SD)	46.2 (10.8)	46.5 (10.0)	46.4 (10.4)		
Median (IQR)	48.8 (39, 54.5)	48.5 (40.9, 54.0)	48.6 (40.1, 54.4)		
Missing	35	26	61		
<b>SF-12 Mental</b>					
N	246	254	500	1.8 (-0.09, 3.64); 0.061	0.9 (-0.58, 2.38); 0.234
Mean (SD)	41.1 (10.9)	42.9 (10.2)	42.0 (10.6)		
Median (IQR)	41.7 (32.2, 50.4)	42.7 (35.4, 51.5)	42.3 (34.3, 51.1)		
Missing	34	26	60		
<b>EQ-5D</b>					
N	279	277	556	0.04 (-0.009, 0.09); 0.104	0.02 (-0.01, 0.06); 0.115
Mean (SD)	0.63 (0.28)	0.68 (0.26)	0.66 (0.27)		Non-parametric test: P=0.007
Median (IQR)	0.72 (0.55, 0.80)	0.75 (0.64, 0.84)	0.74 (0.59, 0.84)		
Missing	1	3	4		
<b>EQ-5D VAS</b>					
N	244	253	497	1.9 (-1.99, 5.89); 0.333	1.0 (-2.04, 3.94); 0.533
Mean (SD)	65.0 (20.6)	67.3 (20.6)	66.2 (20.6)		
Median (IQR)	70 (50, 80)	70 (56, 85)	70 (50, 80)		
Missing	36	27	63		
<b>HADS Anxiety</b>					
N	247	254	501	-0.2 (-0.66, 0.28); 0.425	0.2 (-0.22, 0.55); 0.404
Mean (SD)	10.5 (2.7)	10.3 (2.7)	10.4 (2.7)		
Median (IQR)	10 (8, 12)	10 (8, 12)	10 (8, 12)		
Missing	33	26	59		
<b>HADS Depression</b>					
N	247	254	501	-0.11 (-0.44, 0.22)	-0.15 (-0.46, 0.17); 0.234

				0.23); 0.536	0.362
Mean (SD)	9.1 (1.9)	9.0 (1.7)	9.1 (1.8)		
Median (IQR)	9 (8, 10)	9 (8, 10)	9 (8, 10)		
Missing	33	26	59		
<b>PSEQ</b>					
N	247	253	500	2.5 (0.10, 4.98); 0.041	2.4 (0.62, 4.09); 0.008
Mean (SD)	35.5 (14.2)	38.1 (13.6)	36.8 (14.0)		
Median (IQR)	38 (24, 46)	40 (28, 48)	38.5 (26, 48)		
Missing	33	27	60		
<b>HeiQ</b>					
N	247	254	501	0.10 (-0.03, 0.23); 0.129	0.05 (-0.06, 0.16); 0.358
Mean (SD)	2.9 (0.70)	3.0 (0.70)	2.9 (0.7)		
Median (IQR)	3 (2.4, 3.2)	3 (2.6, 3.4)	3 (2.4, 3.4)		
Missing	33	26	59		

\* Models adjusted for age, gender, the baseline value of the dependent variable and baseline stratification factors (type of headache and geographical locality)

**Table 12: Study outcomes at 8 months follow-up**

	Standard care	Self-management	TOTAL	Unadjusted mean difference (95% CI); p-value	Adjusted mean difference* (95% CI); p-value
<b>HIT-6</b>					
N	267	285	552	-0.2 (-1.41, 0.96); 0.709	0.1 (-0.93, 1.11); 0.860
Mean (SD)	61.0 (7.3)	60.7 (6.5)	60.8 (6.9)		
Median (IQR)	62 (56, 66)	61 (58, 64)	61 (57, 65)		
Missing	1	1	2		
<b>CH-QLQ – role restrictive</b>					
N	231	256	487	0.8 (-2.72, 4.29); 0.661	-0.04 (-2.8, 2.71); 0.975
Mean (SD)	65.4 (19.6)	66.4 (17.9)	66.0 (18.7)		
Median (IQR)	66.7 (52.4, 81.0)	66.7 (54.8, 79.8)	66.7 (52.4, 81.0)		
Missing	37	30	67		
<b>CH-QLQ – role preventive</b>					
N	231	256	487	1.7 (-2.09, 5.55); 0.374	1.3 (-1.40, 3.98); 0.348
Mean (SD)	77.4 (22.0)	79.3 (19.2)	78.4 (20.6)		
Median (IQR)	83.3 (66.7, 95.8)	83.3 (70.8, 95.8)	83.3 (66.7, 95.8)		
Missing	37	30	67		
<b>CH-QLQ – emotional function</b>					
N	231	255	486	0.2 (-3.90, 4.26); 0.932	-0.4 (-3.62, 2.89); 0.827
Mean (SD)	69.2 (23.3)	69.3 (22.6)	69.3 (22.9)		
Median (IQR)	72.2 (55.6, 88.9)	72.2 (55.6, 88.9)	72.2 (55.6, 88.9)		
Missing	37	31	68		
<b>SF-12 Physical</b>					
N	229	254	483	0.5 (-1.39, 2.30);	-0.07 (-1.31, 1.17);

				0.630	0.915
Mean (SD)	46.8 (10.8)	47.3 (9.9)	47.1 (10.3)		
Median (IQR)	49.4 (39.9, 54.8)	48.5 (41.6, 54.8)	48.9 (41.3, 54.8)		
Missing	39	32	71		
<b>SF-12 Mental</b>					
N	229	254	483	1.3 (-0.63, 3.20); 0.188	0.9 (-0.61, 2.38); 0.246
Mean (SD)	41.5 (10.3)	42.9 (10.5)	42.2 (10.4)		
Median (IQR)	41.2 (35.0, 49.3)	43.0 (35.4, 51.2)	42.0 (35.2, 50.4)		
Missing	39	32	71		
<b>EQ-5D</b>					
N	265	282	547	0.05 (-0.0003, 0.095); 0.051	0.03 (-0.001, 0.061); 0.056
Mean (SD)	0.65 (0.27)	0.70 (0.24)	0.67 (0.26)		Non-parametric test: P=0.027
Median (IQR)	0.74 (0.56, 0.80)	0.74 (0.65, 0.84)	0.74 (0.64, 0.84)		
Missing	3	4	7		
<b>EQ-5D VAS</b>					
N	227	254	481	2.9 (-0.90, 6.63); 0.135	2.3 (-0.61, 5.20); 0.122
Mean (SD)	66.1 (21.3)	69.0 (20.1)	67.6 (20.7)		
Median (IQR)	70 (50, 80)	75 (55, 85)	70 (55, 85)		
Missing	41	32	73		
<b>HADS Anxiety</b>					
N	229	254	483	-0.5 (-0.97, - 0.001); 0.050	-0.2 (-0.64, 0.21); 0.311
Mean (SD)	10.5 (2.7)	10.0 (2.7)	10.2 (2.7)		
Median (IQR)	10 (8, 12)	10 (8, 12)	10 (8, 12)		
Missing	39	32	71		
<b>HADS Depression</b>					
N	229	254	483	-0.1 (-0.38, 0.26);	-0.1 (-0.41, 0.16);

				0.726	0.400
Mean (SD)	9.1 (1.9)	9.0 (1.6)	9.1 (1.8)		
Median (IQR)	9 (8, 10)	9 (8, 10)	9 (8, 10)		
Missing	39	32	71		
<b>PSEQ</b>					
N	229	255	484	1.7 (-0.82, 4.18); 0.189	1.5 (-0.27, 3.35); 0.096
Mean (SD)	37.0 (14.7)	38.7 (13.3)	37.9 (14.0)		
Median (IQR)	40 (28, 49)	40 (28, 50)	40 (28, 49)		
Missing	39	31	70		
<b>HeiQ</b>					
N	227	255	482	0.06 (-0.06, 0.19); 0.324	0.04 (-0.06, 0.14); 0.402
Mean (SD)	2.9 (0.7)	3.0 (0.69)	2.9 (0.7)		
Median (IQR)	3 (2.4, 3.4)	3 (2.6, 3.4)	3 (2.6, 3.4)		
Missing	41	31	72		

\* Model adjusted for age, gender, the baseline value of the dependent variable and baseline stratification factors (type of headache and geographical locality)

**Table 13: Study outcomes at 12 months follow-up**

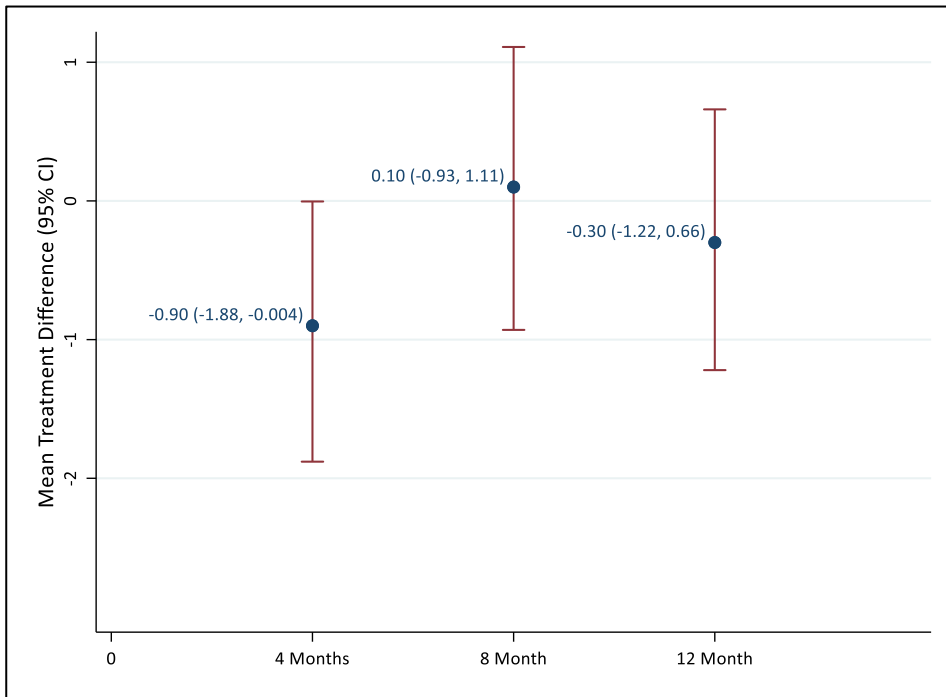
	Standard care	Self-management	TOTAL	Unadjusted mean difference (95% CI); p-value	Adjusted mean difference* (95% CI); p-value
<b>HIT-6</b>					
N	286	303	589	-0.6 (-1.75, 0.52); 0.290	-0.3 (-1.22, 0.66); 0.555
Mean (SD)	60.6 (7.1)	60.0 (7.0)	60.3 (7.0)		
Median (IQR)	62 (57, 65)	61 (55, 64)	61 (56, 65)		
Missing	1	3	4		
<b>CH-QLQ – role restrictive</b>					
N	238	271	509	1.0 (-2.26, 4.21); 0.555	0.4 (-2.19, 2.95); 0.771
Mean (SD)	66.2 (19.0)	67.1 (18.2)	66.7 (18.6)		
Median (IQR)	66.7 (54.8, 81.0)	66.7 (57.1, 81.0)	66.7 (54.8, 81.0)		
Missing	49	35	84		
<b>CH-QLQ – role preventive</b>					
N	238	271	509	2.5 (-0.92, 5.84); 0.153	2.2 (-0.37, 4.80); 0.093
Mean (SD)	77.7 (20.3)	80.2 (18.5)	79.1 (19.4)		
Median (IQR)	83.3 (66.7, 95.8)	83.3 (70.8, 95.8)	83.3 (70.8, 95.8)		
Missing	49	35	84		
<b>CH-QLQ – emotional function</b>					
N	238	271	509	1.9 (-2.08, 5.82); 0.354	1.3 (-1.87, 4.53); 0.415
Mean (SD)	68.8 (23.3)	70.7 (22.1)	69.8 (22.7)		
Median (IQR)	72.2 (50, 88.9)	72.2 (55.6, 88.9)	72.2 (55.6, 88.9)		
Missing	49	35	84		
<b>SF-12 Physical</b>					
N	237	268	505	1.0 (-0.81, 2.74);	0.5 (-0.73, 1.83);

				0.285	0.399
Mean (SD)	46.0 (10.8)	47.0 (9.4)	46.6 (10.1)		
Median (IQR)	47.3 (37.6, 54.5)	48.7 (40.8, 54.7)	48.1 (40.3, 54.6)		
Missing	50	38	88		
<b>SF-12 Mental</b>					
N	237	270	507	1.6 (-0.38, 3.62); 0.111	1.0 (-0.69, 2.71); 0.242
Mean (SD)	42.1 (11.0)	43.9 (10.6)	43.1 (10.8)		
Median (IQR)	41.5 (33.9, 50.7)	44.6 (37.1, 52.2)	43.4 (35.5, 51.4)		
Missing	50	36	86		
<b>EQ-5D</b>					
N	286	304	590	0.03 (-0.01, 0.07); 0.196	0.004 (-0.03, 0.04); 0.793
Mean (SD)	0.67 (0.26)	0.70 (0.25)	0.68 (0.25)		Non-parametric test: P=0.086
Median (IQR)	0.74 (0.60, 0.81)	0.74 (0.64, 0.84)	0.74 (0.63, 0.84)		
Missing	1	2	3		
<b>EQ-5D VAS</b>					
N	230	267	497	4.3 (0.28, 8.28); 0.036	4.0 (1.02, 6.95); 0.008
Mean (SD)	65.4 (22.4)	69.9 (20.7)	67.8 (21.6)		
Median (IQR)	70 (50, 80)	75 (60, 85)	75 (55, 85)		
Missing	57	39	96		
<b>HADS Anxiety</b>					
N	237	269	506	-0.1 (-0.61, 0.36); 0.600	0.2 (-0.19, 0.62); 0.302
Mean (SD)	10.3 (2.8)	10.2 (2.7)	10.2 (2.7)		
Median (IQR)	10 (8, 12)	10 (8, 12)	10 (8, 10)		
Missing	50	37	87		
<b>HADS Depression</b>					
N	237	269	506	-0.004 (-0.32, 0.312)	-0.03 (-0.33, 0.26); 0.842

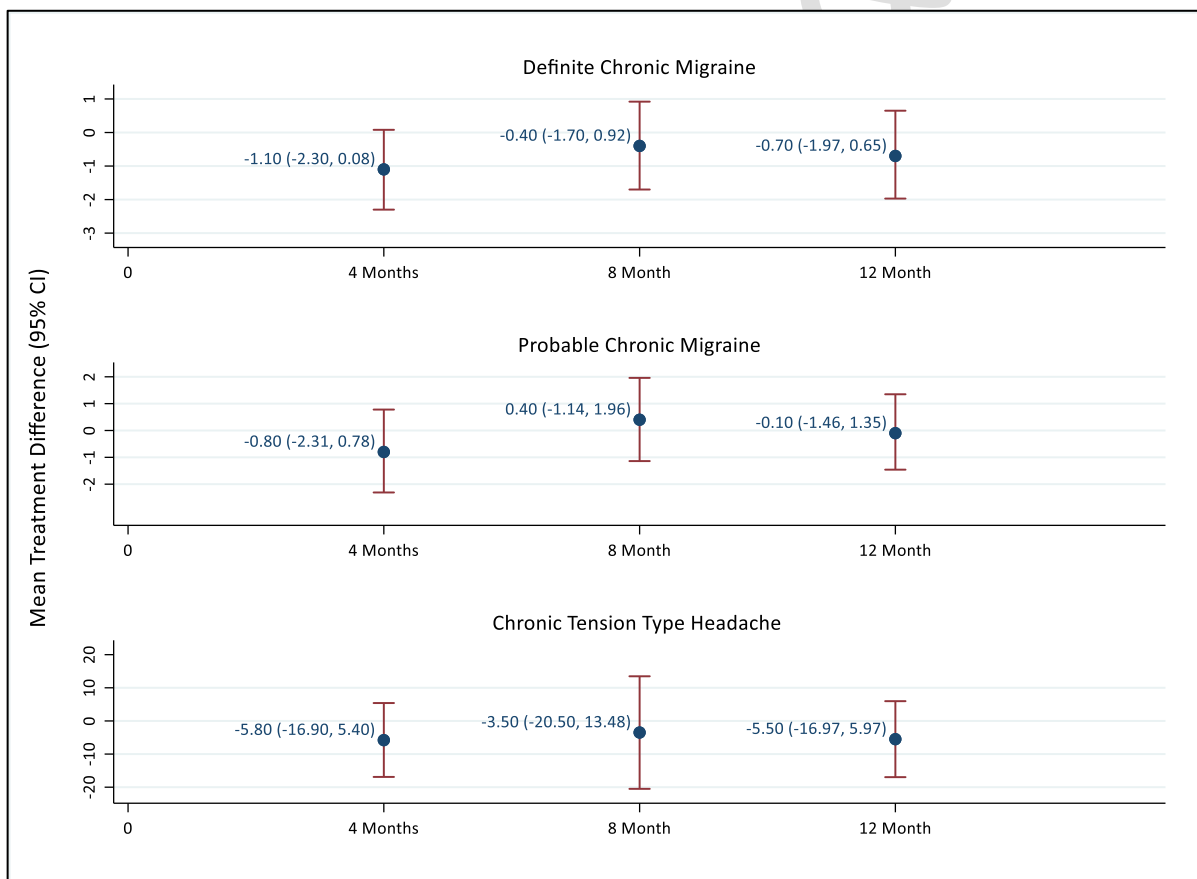
				0.31); 0.978	0.830
Mean (SD)	9.1 (1.8)	9.1 (1.7)	9.1 (1.8)		
Median (IQR)	9 (8, 10)	9 (8, 10)	9 (8, 10)		
Missing	50	37	87		
<b>PSEQ</b>					
N	237	270	507	2.4 (-0.19, 4.94); 0.069	2.2 (0.31, 4.08); 0.022
Mean (SD)	37.1 (14.6)	39.6 (13.6)	38.4 (14.1)		
Median (IQR)	40 (27, 48)	42 (31, 50)	41 (29, 49)		
Missing	50	36	86		
<b>HeiQ</b>					
N	236	270	506	0.04 (-0.09, 0.18); 0.528	0.002 (-0.10, 0.10); 0.969
Mean (SD)	2.9 (0.70)	3.0 (0.7)	3.0 (0.7)		
Median (IQR)	3 (2.6, 3.4)	3 (2.6, 3.4)	3 (2.6, 3.4)		
Missing	51	36	87		



**Figure 3: Plot of HIT-6 (Primary outcome) over time by treatment group**



**Figure 4: Plot of HIT-6 (Primary outcome) over time by headache type and treatment group**



Note: Adjusted estimates used for definite and probable migraine. Unadjusted estimates used for chronic tension type headache due to there being a small number of participants.

**Table 14: General health outcomes at 4 months follow-up**

Standard care	Self-management	TOTAL	Unadjusted mean difference	Adjusted mean difference* (95%
---------------	-----------------	-------	----------------------------	--------------------------------

				(95% CI); p-value	CI); p-value
<b>Headache/migraine days over the last 4 weeks</b>					
N	241	251	492	0.9 (-0.43, 2.32); 0.180	1.4 (0.38, 2.47); 0.008
Mean (SD)	12.5 (7.6)	13.4 (7.6)	13.0 (7.6)		
Median (IQR)	10 (7, 16)	13 (7, 19)	12 (7, 18)		
Missing	39	29	68		
<b>Pain killer or triptan use for headache/migraine over the last 4 weeks (days)</b>					
N	244	252	496	-0.1 (-1.36, 1.13); 0.853	0.2 (-0.89, 1.22); 0.758
Mean (SD)	9.5 (7.3)	9.3 (6.9)	9.4 (7.1)		
Median (IQR)	8 (4, 12)	8 (4, 13)	8 (4, 13)		
Missing	36	28	64		
<b>Average number of hours the headache/migraine lasted on the days they had it</b>					
N	226	223	449	0.004 (-1.28, 1.29); 0.995	0.06 (-1.21, 1.33); 0.931  Non-parametric test: P=0.477
Mean (SD)	8.5 (7.2)	8.5 (6.6)	8.5 (6.9)		
Median (IQR)	6 (4, 12)	6 (4, 12)	6 (4, 12)		
Missing	54	57	111		
<b>Average severity (0-10; No pain to Extremely severe pain) on the days you had a headache/migraine</b>					
N	227	225	452	-0.1 (-0.51, 0.29); 0.596	-0.1 (-0.47, 0.24); 0.528
Mean (SD)	6.0 (2.1)	5.9 (1.9)	6.0 (2.0)		
Median (IQR)	6 (5, 8)	6 (5, 7)	6 (5, 7.5)		
Missing	53	55	108		

<b>How fatigued were you on average in the past seven days</b>				OR: 0.8 (-0.61, 1.14); 0.249	OR: 0.9 (0.63, 1.21); 0.419	
	Not at all	4 (1.4%)	12 (4.3%)			16 (2.9%)
	A little bit	53 (18.9%)	54 (19.3%)			107 (19.1%)
	Somewhat	53 (18.9%)	52 (18.6%)			105 (18.8%)
	Quite a bit	76 (27.2%)	86 (30.7%)			162 (28.9%)
	Very much	60 (21.4%)	49 (17.5%)			109 (19.5%)
	Missing	34 (12.2%)	27 (9.6%)			61 (10.9%)
<b>Sleep quality in the past seven days</b>				OR: 1.0 (0.68, 1.33); 0.770	OR: 1.0 (0.73, 1.43); 0.895	
	Very poor	38 (13.6%)	33 (11.8%)			71 (12.7%)
	Poor	62 (22.1%)	81 (28.9%)			143 (25.5%)
	Fair	105 (37.5%)	91 (32.5%)			196 (35.0%)
	Good	37 (13.2%)	42 (15.0%)			79 (14.1%)
	Very good	5 (1.8%)	6 (2.1%)			11 (2.0%)
	Missing	33 (11.8%)	27 (9.6%)			60 (10.7%)
<b>Average pain (other than headache) in the past seven days (0-10; No pain to Worst imaginable pain)</b>				-0.3 (-0.83, 0.22); 0.250	-0.3 (-0.66, 0.14); 0.202	
	N	246	253			499
	Mean (SD)	4.3 (2.8)	3.9 (2.7)			4.1 (2.7)
	Median (IQR)	4 (2, 6)	4 (2, 6)			4 (2, 6)
	Missing	34	27			61

**Table 15: General health outcomes at 8 months follow-up**

	Standard care	Self-management	TOTAL	Unadjusted mean difference (95% CI); p-value	Adjusted mean difference* (95% CI); p-value
<b>Headache/migraine days over the last 4 weeks</b>					
N	229	254	483	-0.1 (-1.55, 1.28); 0.850	0.3 (-0.89, 1.45); 0.636
Mean (SD)	11.9 (8.2)	11.8 (7.4)	11.9 (7.8)		
Median (IQR)	10 (5, 18)	10 (6, 16)	10 (5, 17)		
Missing	39	32	71		
<b>Pain killer or triptan use for headache/migraine over the last 4 weeks (days)</b>					
N	229	254	483	-0.4 (-1.75, 0.86); 0.503	-0.1 (-1.28, 1.01); 0.819
Mean (SD)	9.3 (7.5)	8.8 (7.2)	9.0 (7.3)		
Median (IQR)	8 (3, 14)	7 (3, 12)	7 (3, 13)		
Missing	39	32	71		
<b>Average number of hours the headache/migraine lasted on the days they had it</b>					
N	226	248	474	1.3 (-0.16, 2.69); 0.082	1.9 (0.42, 3.28); 0.011  Non-parametric test: P=0.037
Mean (SD)	8.2 (7.1)	9.2 (7.2)	8.7 (7.2)		
Median (IQR)	6 (3, 10)	7 (4, 12)	6 (4, 11)		
Missing	42	38	80		
<b>Average severity (0-10; No pain to Extremely severe pain) on the days you had a headache/migraine</b>					
N	225	248	473	0.1 (-0.24, 0.52);	0.3 (-0.09, 0.61);

				0.461	0.139
Mean (SD)	5.9 (2.1)	6.1 (2.0)	6.0 (2.1)		
Median (IQR)	6 (5, 7)	6 (5, 7)	6 (5, 7)		
Missing	43	38	81		
<b>How fatigued were you on average in the past seven days</b>					
Not at all	14 (5.2%)	10 (3.5%)	24 (4.3%)	OR: 0.8 (0.60, 1.20); 0.342	OR: 0.9 (0.62, 1.19); 0.372
A little bit	36 (13.4%)	58 (20.3%)	94 (17.0%)		
Somewhat	57 (21.3%)	65 (22.7%)	122 (22.0%)		
Quite a bit	81 (30.2%)	81 (28.3%)	162 (29.2%)		
Very much	41 (15.3%)	41 (14.3%)	82 (14.8%)		
Missing	39 (14.5%)	31 (10.8%)	70 (12.6%)		
<b>Sleep quality in the past seven days</b>					
Very poor	35 (13.1%)	25 (8.7%)	60 (10.8%)	OR: 1.2 (0.88, 1.68); 0.238	OR: 1.3 (0.91, 1.86); 0.144
Poor	64 (23.9%)	71 (24.8%)	135 (24.4%)		
Fair	82 (30.6%)	107 (37.4%)	189 (34.1%)		
Good	40 (14.9%)	45 (15.7%)	85 (15.3%)		
Very good	7 (2.6%)	7 (2.5%)	14 (2.5%)		
Missing	40 (14.9%)	31 (10.8%)	71 (12.8%)		
<b>Average pain (other than headache) in the past seven days (0-10; No pain to Worst imaginable pain)</b>					
N	229	255	484	-0.4 (-0.90, 0.11); 0.127	-0.3 (-0.67, 0.17); 0.235
Mean (SD)	4.3 (2.7)	3.9 (2.7)	4.1 (2.7)		
Median (IQR)	4 (2, 6)	4 (2, 6)	4 (2, 6)		
Missing	39	31	70		

**Table 16: General health outcomes at 12 months follow-up**

	Standard care	Self-management	TOTAL	Unadjusted mean difference (95% CI); p-value	Adjusted mean difference* (95% CI); p-value
<b>Headache/migraine days over the last 4 weeks</b>					
N	236	271	507	0.3 (-1.07, 1.69); 0.661	0.8 (-0.40, 1.94); 0.196
Mean (SD)	11.5 (7.9)	11.8 (7.8)	11.7 (7.9)		
Median (IQR)	10 (4.5, 16)	10 (6, 17)	10 (5, 16)		
Missing	51	35	86		
<b>Pain killer or triptan use for headache/migraine over the last 4 weeks (days)</b>					
N	236	269	505	0.2 (-1.03, 1.51); 0.708	0.6 (-0.51, 1.69); 0.296
Mean (SD)	9.0 (7.2)	9.3 (7.4)	9.2 (7.3)		
Median (IQR)	8 (3, 12)	8 (3, 14)	8 (3, 13)		
Missing	51	37	88		
<b>Average number of hours the headache/migraine lasted on the days they had it</b>					
N	233	268	501	1.0 (-0.33, 2.24); 0.145	1.0 (-0.18, 2.20); 0.098  Non-parametric test: P=0.079
Mean (SD)	8.6 (7.2)	9.6 (7.4)	9.1 (7.3)		
Median (IQR)	6 (4, 12)	7 (4, 12)	6 (4, 12)		
Missing	54	38	92		
<b>Average severity (0-10; No pain to Extremely severe pain) on the days you had a headache/migraine</b>					
N	237	270	507	-0.04 (-0.37, 0.29); 0.821	-0.04 (-0.35, 0.27); 0.800

Mean (SD)	6.0 (1.9)	6.0 (1.9)	6.0 (1.9)		
Median (IQR)	6 (5, 7)	6 (5, 7)	6 (5, 7)		
Missing	50	36	86		
<b>How fatigued were you on average in the past seven days</b>					
Not at all	14 (4.9%)	12 (3.9%)	26 (4.4%)	OR: 0.9 (0.66, 1.34); 0.738	OR: 0.9 (0.62, 1.25); 0.467
A little bit	65 (22.6%)	72 (23.5%)	137 (23.1%)		
Somewhat	59 (20.6%)	89 (29.1%)	148 (25.0%)		
Quite a bit	68 (23.7%)	65 (21.2%)	133 (22.4%)		
Very much	32 (11.1%)	32 (10.5%)	64 (10.8%)		
Missing	49 (17.1%)	36 (11.8%)	85 (14.3%)		
<b>Sleep quality in the past seven days</b>					
Very poor	28 (9.8%)	26 (8.5%)	54 (9.1%)	1.0 (0.72, 1.36); 0.952	1.0 (0.75, 1.43); 0.852
Poor	58 (20.2%)	74 (24.2%)	132 (22.3%)		
Fair	96 (33.4%)	107 (35.0%)	203 (34.2%)		
Good	47 (16.4%)	57 (18.6%)	104 (17.6%)		
Very good	9 (3.1%)	6 (2.0%)	15 (2.5%)		
Missing	49 (17.1%)	36 (11.7%)	85 (14.3%)		
<b>Average pain (other than headache) in the past seven days (0-10; No pain to Worst imaginable pain)</b>					
N	237	270	507	-0.2 (-0.68, 0.32); 0.480	-0.1 (-0.51, 0.30); 0.612
Mean (SD)	4.1 (2.9)	3.9 (2.8)	4.0 (2.8)		
Median (IQR)	4 (2, 6)	4 (2, 6)	4 (2, 6)		
Missing	50	36	86		

**Table 17: Baseline demographic characteristics of randomised participants summarised by compliance status (minimum compliance)**

	Standard care	Non-Complier	Complier	Complier vs Non-complier p-value <sup>a</sup>
<b>Age (years)</b>				
N	356	119	261	0.001
Mean (SD)	47.9 (15.0)	43.5 (15.7)	48.9 (14.4)	
Median (IQR)	49 (37, 58.5)	45 (28, 54)	50 (39, 58)	
Missing	0	0	0	
<b>Gender</b>				
Male	71 (19.9%)	16 (13.4%)	39 (14.9%)	0.713
Female	285 (80.1%)	102 (85.7%)	221 (84.7%)	
Missing	0	1 (0.9%)	1 (0.4%)	
<b>Ethnicity</b>				
White	287 (80.6%)	88 (73.9%)	220 (84.3%)	0.053
Black or Black British	24 (6.7%)	6 (5.0%)	12 (4.6%)	
Asian or Asian British	29 (8.2%)	15 (12.6%)	16 (6.1%)	
Mixed	8 (2.2%)	5 (4.2%)	8 (3.1%)	
Other	2 (0.6%)	4 (3.4%)	2 (0.8%)	
Missing	6 (1.7%)	1 (0.9%)	3 (1.1%)	
<b>Employment status</b>				
Employed	195 (54.8%)	64 (53.8%)	159 (60.9%)	0.045
Unemployed	9 (2.5%)	7 (5.9%)	7 (2.7%)	
At school or full time education	10 (2.8%)	7 (5.9%)	6 (2.3%)	
Unable to work due to long term sickness	36 (10.1%)	16 (13.4%)	17 (6.5%)	
Looking after home/family	22 (6.2%)	7 (5.9%)	15 (5.8%)	



Retired from paid work	61 (17.1%)	14 (11.7%)	45 (17.2%)	
Other	16 (4.5%)	2 (1.7%)	9 (3.5%)	
Missing	7 (2.0%)	2 (1.7%)	3 (1.1%)	
<b>Age left full time education</b>				
Did not receive formal education	2 (0.6%)	0	2 (0.8%)	0.683
Age 12 or less	3 (0.8%)	0	2 (0.8%)	
Age 13 to 16	94 (26.4%)	24 (20.2%)	60 (22.9%)	
Age 17 to 19	93 (26.1%)	34 (28.6%)	76 (29.1%)	
Age 20 or over	144 (40.5%)	52 (43.7%)	111 (42.5%)	
Still in full time education	12 (3.4%)	7 (5.9%)	8 (3.1%)	
Missing	8 (2.2%)	2 (1.6%)	2 (0.8%)	
<b>Headache classification</b>				
Definite chronic migraine	191 (53.7%)	58 (48.7%)	147 (56.3%)	0.261
Probable chronic migraine	160 (44.9%)	59 (49.6%)	112 (42.9%)	
Chronic tension type headache	5 (1.4%)	2 (1.7%)	2 (0.8%)	
Missing	0	0	0	
<b>Medication overuse</b>				
No	158 (44.4%)	55 (46.2%)	113 (43.3%)	0.867
Yes	198 (55.6%)	64 (53.8%)	148 (56.7%)	
Missing	0	0	0	
<b>Headache/migraine days over the last 4 weeks</b>				
N	354	116	260	0.423
Mean (SD)	16.4 (7.0)	16.1 (7.0)	16.7 (6.7)	

Median (IQR)	16 (10, 21)	15.5 (11, 20)	16 (12, 20)	
Missing	2	3	1	
<b>Pain killer or triptan use for headache/migraine over the last 4 weeks (days)</b>				
N	350	117	258	0.743
Mean (SD)	12.3 (7.3)	12.7 (8.2)	12.4 (7.2)	
Median (IQR)	12 (8, 16)	12 (6, 18)	12 (6, 16)	
Missing	6	2	3	
<b>Average number of hours the headache/migraine lasted on the days they had it</b>				
N	239	78	180	0.527
Mean (SD)	10.3 (8.1)	10.0 (7.9)	10.7 (7.9)	
Median (IQR)	7 (4, 15)	7 (4, 12)	8 (4, 15)	
Missing	117	41	81	
<b>Average severity (0-10; No pain to Extremely severe pain) on the days you had a headache/migraine</b>				
N	246	82	185	0.455
Mean (SD)	6.7 (2.0)	6.9 (1.7)	6.7 (1.9)	
Median (IQR)	7 (6, 8)	7 (6, 8)	7 (6, 8)	
Missing	110	37	76	
<b>How fatigued were you on average in the past seven days</b>				
Not at all	4 (1.1%)	2 (1.7%)	4 (1.5%)	0.543
A little bit	44 (12.4%)	10 (8.4%)	34 (13.0%)	
Somewhat	85 (23.9%)	26 (21.8%)	54 (20.7%)	

Quite a bit	139 (39.0%)	43 (36.1%)	104 (39.9%)	
Very much	82 (23.0%)	36 (30.3%)	63 (24.1%)	
Missing	2 (0.6%)	2 (1.7%)	2 (0.8%)	
<b>Sleep quality in the past seven days</b>				
Very poor	45 (12.6%)	26 (21.9%)	31 (11.9%)	0.099
Poor	115 (32.3%)	41 (34.4%)	88 (33.7%)	
Fair	132 (37.1%)	36 (30.2%)	99 (37.9%)	
Good	56 (15.7%)	12 (10.1%)	37 (14.2%)	
Very good	7 (2.0%)	2 (1.7%)	5 (1.9%)	
Missing	1 (0.3%)	2 (1.7%)	1 (0.4%)	
<b>Average pain (other than headache) in the past seven days (0-10; No pain to Worst imaginable pain)</b>				
N	350	117	256	0.322
Mean (SD)	4.5 (2.8)	4.6 (2.8)	4.3 (2.7)	
Median (IQR)	5 (2, 7)	5 (2, 7)	4 (2, 6)	
Missing	6	2	5	

<sup>a</sup> Univariate comparison between compliers and non-compliers in self-management intervention arm  
Note: Compliance will be of two levels - Minimal compliance with the intervention is defined as the participant attending day 1 of the intervention plus the one-to-one session.

**Table 20. 1: Baseline demographic characteristics of randomised participants summarised by compliance status (full compliance)**

	Standard care	Non-Complier	Complier	Complier vs Non-complier p-value <sup>a</sup>
<b>Age (years)</b>				
N	356	163	217	0.007
Mean (SD)	47.9 (15.0)	44.8 (15.4)	49.0 (14.4)	
Median (IQR)	49 (37, 58.5)	46 (32, 55)	50 (39, 58)	
Missing	0	0	0	
<b>Gender</b>				
Male	71 (19.9%)	22 (13.5%)	33 (15.2%)	0.643
Female	285 (80.1%)	140 (85.9%)	183 (84.3%)	
Missing	0	1 (0.6%)	1 (0.5%)	
<b>Ethnicity</b>				
White	287 (80.6%)	123 (75.5%)	185 (85.3%)	0.148
Black or Black British	24 (6.7%)	10 (6.1%)	8 (3.7%)	
Asian or Asian British	29 (8.2%)	18 (11.0%)	13 (6.0%)	
Mixed	8 (2.2%)	6 (3.7%)	7 (3.2%)	
Other	2 (0.6%)	4 (2.5%)	2 (0.9%)	
Missing	6 (1.7%)	2 (1.2%)	2 (0.9%)	
<b>Employment status</b>				
Employed	195 (54.8%)	92 (56.4%)	131 (60.4%)	0.135
Unemployed	9 (2.5%)	8 (4.9%)	6 (2.7%)	
At school or full time education	10 (2.8%)	7 (4.3%)	6 (2.7%)	
Unable to work due to long term sickness	36 (10.1%)	20 (12.3%)	13 (6.0%)	
Looking after home/family	22 (6.2%)	11 (6.8%)	11 (5.1%)	

Retired from paid work	61 (17.1%)	20 (12.3%)	39 (18.0%)	
Other	16 (4.5%)	3 (1.8%)	8 (3.7%)	
Missing	7 (2.0%)	2 (1.2%)	3 (1.4%)	
<b>Age left full time education</b>				
Did not receive formal education	2 (0.6%)	1 (0.6%)	1 (0.5%)	0.971
Age 12 or less	3 (0.8%)	1 (0.6%)	1 (0.5%)	
Age 13 to 16	94 (26.4%)	38 (23.3%)	46 (21.2%)	
Age 17 to 19	93 (26.1%)	44 (27.0%)	66 (30.4%)	
Age 20 or over	144 (40.5%)	70 (42.9%)	93 (42.9%)	
Still in full time education	12 (3.4%)	7 (4.3%)	8 (3.6%)	
Missing	8 (2.2%)	2 (1.3%)	2 (0.9%)	
<b>Headache classification</b>				
Definite chronic migraine	191 (53.7%)	82 (50.3%)	123 (56.7%)	0.245
Probable chronic migraine	160 (44.9%)	78 (47.9%)	93 (42.8%)	
Chronic tension type headache	5 (1.4%)	3 (1.8%)	1 (0.5%)	
Missing	0	0	0	
<b>Medication overuse</b>				
No	158 (44.4%)	78 (47.9%)	90 (41.5%)	0.464
Yes	198 (55.6%)	85 (52.1%)	127 (58.5%)	
Missing	0	0	0	
<b>Headache/migraine days over the last 4 weeks</b>				
N	354	160	216	0.819
Mean (SD)	16.4 (7.0)	16.6 (7.1)	16.4 (6.6)	

Median (IQR)	16 (10, 21)	16 (11, 20)	16 (12, 20)	
Missing	2	3	1	
<b>Pain killer or triptan use for headache/migraine over the last 4 weeks (days)</b>				
N	350	159	216	0.568
Mean (SD)	12.3 (7.3)	12.7 (8.0)	12.3 (7.1)	
Median (IQR)	12 (8, 16)	12 (6, 18)	12 (6, 16)	
Missing	6	4	1	
<b>Average number of hours the headache/migraine lasted on the days they had it</b>				
N	239	110	148	0.819
Mean (SD)	10.3 (8.1)	10.3 (7.9)	10.5 (7.9)	
Median (IQR)	7 (4, 15)	7 (4, 14)	8 (4, 14.5)	
Missing	117	53	69	
<b>Average severity (0-10; No pain to Extremely severe pain) on the days you had a headache/migraine</b>				
N	246	115	152	0.349
Mean (SD)	6.7 (2.0)	6.9 (1.8)	6.7 (1.8)	
Median (IQR)	7 (6, 8)	7 (6, 8)	7 (6, 8)	
Missing	110	48	65	
<b>How fatigued were you on average in the past seven days</b>				
Not at all	4 (1.1%)	2 (1.2%)	4 (1.8%)	0.841
A little bit	44 (12.4%)	17 (10.4%)	27 (12.5%)	
Somewhat	85 (23.9%)	34 (20.9%)	46 (21.2%)	

Quite a bit	139 (39.0%)	61 (37.4%)	86 (39.6%)	
Very much	82 (23.0%)	47 (28.9%)	52 (24.0%)	
Missing	2 (0.6%)	2 (1.2%)	2 (0.9%)	
<b>Sleep quality in the past seven days</b>				
Very poor	45 (12.6%)	33 (20.2%)	24 (11.0%)	0.130
Poor	115 (32.3%)	49 (30.1%)	80 (36.9%)	
Fair	132 (37.1%)	56 (34.4%)	79 (36.4%)	
Good	56 (15.7%)	21 (12.9%)	28 (12.9%)	
Very good	7 (2.0%)	2 (1.2%)	5 (2.3%)	
Missing	1 (0.3%)	2 (1.2%)	1 (0.5%)	
<b>Average pain (other than headache) in the past seven days (0-10; No pain to Worst imaginable pain)</b>				
N	350	159	214	0.021
Mean (SD)	4.5 (2.8)	4.8 (2.9)	4.1 (2.6)	
Median (IQR)	5 (2, 7)	5 (2, 7)	4 (2, 6)	
Missing	6	4	3	

<sup>a</sup> Univariate comparison between compliers and non-compliers in self-management intervention arm

Note: Full compliance is defined as the participant attending both days, plus individualised contact with the nurse

**Table 18: Baseline outcome measures of randomised participants summarised by compliance status (minimum compliance)**

	Standard care	Non-complier	Complier	Complier vs Non-complier p-value <sup>a</sup>
<b>HIT-6</b>				
N	355	118	260	0.234
Mean (SD)	64.4 (5.8)	64.8 (6.2)	64.1 (5.4%)	
Median (IQR)	64 (61, 68)	66 (62, 69)	64 (61, 67.5)	
Missing	1	1	1	

<b>CH-QLQ – role restrictive</b>					
	N	356	118	260	0.124
	Mean (SD)	54.7 (17.6)	52.7 (17.6)	55.6 (16.8)	
	Median (IQR)	57.1 (42.9, 66.7)	52.4 (40.5, 64.3)	57.1 (45.2, 66.7)	
	Missing	0	1	1	
<b>CH-QLQ – role preventive</b>					
	N	356	118	260	0.001
	Mean (SD)	69.7 (21.3)	64.7 (21.3)	72.0 (19.9)	
	Median (IQR)	75 (54.2, 87.5)	66.7 (50, 79.2)	75 (62.5, 87.5)	
	Missing	0	1	1	
<b>CH-QLQ – emotional function</b>					
	N	356	118	259	0.503
	Mean (SD)	57.4 (22.4)	56.1 (24.3)	57.7 (21.5)	
	Median (IQR)	58.3 (38.9, 77.8)	61.1 (33.3, 77.8)	61.1 (38.9, 77.8)	
	Missing	0	1	2	
<b>SF-12 Physical</b>					
	N	351	115	259	0.802
	Mean (SD)	43.9 (11.0)	44.8 (10.5)	45.1 (9.8)	
	Median (IQR)	44.2 (36.9, 52.1)	46.9 (37.6, 52.6)	45.6 (39.2, 52.8)	
	Missing	5	4	2	
<b>SF-12 Mental</b>					
	N	352	115	259	0.006
	Mean (SD)	39.7 (10.3)	37.6 (10.3)	40.9 (10.7)	
	Median (IQR)	39.6 (32.3, 47.2)	37.2 (29.2, 44.1)	40.6 (32.8, 49.7)	
	Missing	4	4	2	
<b>EQ-5D</b>					
	N	351	117	259	0.010
	Mean (SD)	0.63 (0.25)	0.59 (0.30)	0.66 (0.23)	
	Median (IQR)	0.71 (0.53, 0.77)	0.70 (0.43, 0.77)	0.73 (0.58, 0.80)	



Missing	5	2	2	
<b>EQ-5D VAS</b>				
N	355	117	258	0.261
Mean (SD)	62.5 (19.6)	61.4 (21.2)	63.9 (20.2)	
Median (IQR)	65 (50, 75)	60 (45, 75)	70 (50, 80)	
Missing	1	2	3	
<b>HADS Anxiety</b>				
N	354	117	260	0.051
Mean (SD)	10.9 (2.7)	10.9 (2.8)	10.3 (2.7)	
Median (IQR)	11 (9, 13)	11 (9, 13)	10 (8, 12)	
Missing	2	2	1	
<b>HADS Depression</b>				
N	354	117	260	0.040
Mean (SD)	9.0 (2.0)	9.5 (1.9)	9.1 (1.7)	
Median (IQR)	9 (8, 10)	9 (8, 11)	9 (8, 10)	
Missing	2	1	2	
<b>PSEQ</b>				
N	353	116	259	0.052
Mean (SD)	33.2 (13.4)	30.7 (15.0)	33.7 (13.2)	
Median (IQR)	34 (24, 43)	32 (19.5, 42)	35 (24, 45)	
Missing	3	3	2	
<b>HeiQ</b>				
N	353	117	260	0.061
Mean (SD)	2.8 (0.6)	2.7 (0.7)	2.9 (0.6)	
Median (IQR)	2.8 (2.4, 3.2)	2.8 (2.2, 3.2)	3 (2.4, 3.2)	
Missing	3	2	1	

<sup>a</sup> Univariate analysis comparing compliers and non-compliers in self-management intervention arm

Note: Compliance will be of two levels - Minimal compliance with the intervention is defined as the participant attending day 1 of the intervention plus the one-to-one session.

**Table 21. 1: Baseline outcome measures of randomised participants summarised by compliance status (full compliance)**

	Standard care	Non-complier	Complier	Complier vs Non-complier p-value <sup>a</sup>
<b>HIT-6</b>				
N	355	162	216	0.071
Mean (SD)	64.4 (5.8)	64.9 (6.0)	63.9 (5.3)	
Median (IQR)	64 (61, 68)	66 (62, 69)	64 (61, 67)	
Missing	1	1	1	
<b>CH-QLQ – role restrictive</b>				
N	356	162	216	0.057
Mean (SD)	54.7 (17.6)	52.8 (17.9)	56.2 (16.3)	
Median (IQR)	57.1 (42.9, 66.7)	52.4 (40.5, 64.3)	57.1 (45.2, 66.7)	
Missing	0	1	1	
<b>CH-QLQ – role preventive</b>				
N	356	162	216	0.001
Mean (SD)	69.7 (21.3)	65.6 (21.7)	72.7 (19.2)	
Median (IQR)	75 (54.2, 87.5)	66.7 (50.0, 83.3)	75 (62.5, 87.5)	
Missing	0	1	1	
<b>CH-QLQ – emotional function</b>				
N	356	162	215	0.447
Mean (SD)	57.4 (22.4)	56.2 (23.5)	58.0 (21.6)	
Median (IQR)	58.3 (38.9, 77.8)	61.1 (38.9, 77.8)	61.1 (38.9, 77.8)	
Missing	0	1	2	
<b>SF-12 Physical</b>				
N	351	159	215	0.697
Mean (SD)	43.9 (11.0)	44.8 (10.3)	45.2 (9.8)	
Median (IQR)	44.2 (36.9, 52.1)	46.1 (37.6, 52.9)	45.6 (39.5, 52.8)	

Missing	5	4	2	
<b>SF-12 Mental</b>				
N	352	159	215	0.033
Mean (SD)	39.7 (10.3)	38.5 (10.3)	40.9 (10.8)	
Median (IQR)	39.6 (32.3, 47.2)	37.5 (30.7, 44.6)	40.6 (32.7, 49.9)	
Missing	4	4	2	
<b>EQ-5D</b>				
N	351	161	215	0.002
Mean (SD)	0.63 (0.25)	0.59 (0.29)	0.67 (0.22)	
Median (IQR)	0.71 (0.53, 0.77)	0.70 (0.48, 0.77)	0.73 (0.63, 0.80)	
Missing	5	2	2	
<b>EQ-5D VAS</b>				
N	355	160	215	0.197
Mean (SD)	62.5 (19.6)	61.5 (21.7)	64.3 (19.5)	
Median (IQR)	65 (50, 75)	62.5 (45, 80)	70 (50, 80)	
Missing	1	3	2	
<b>HADS Anxiety</b>				
N	354	161	216	0.187
Mean (SD)	10.9 (2.7)	10.7 (2.8)	10.4 (2.7)	
Median (IQR)	11 (9, 13)	11 (9, 13)	10 (8, 12)	
Missing	2	2	1	
<b>HADS Depression</b>				
N	354	161	216	0.020
Mean (SD)	9.0 (2.0)	9.5 (1.9)	9.0 (1.7)	
Median (IQR)	9 (8, 10)	9 (8, 11)	9 (8, 10)	
Missing	2	2	1	
<b>PSEQ</b>				
N	353	160	215	0.092
Mean (SD)	33.2 (13.4)	31.4 (14.9)	33.8 (13.0)	

Median (IQR)	34 (24, 43)	33 (20, 42.5)	34 (25, 44)	
Missing	3	3	2	
<b>HeiQ</b>				0.210
N	353	161	216	
Mean (SD)	2.8 (0.6)	2.8 (0.7)	2.9 (0.6)	
Median (IQR)	2.8 (2.4, 3.2)	3 (2.4, 3.2)	3 (2.4, 3.2)	
Missing	3	2	1	

<sup>a</sup> Univariate analysis comparing compliers and non-compliers in self-management intervention arm

Note: Full compliance is defined as the participant attending both days, plus individualised contact with the nurse

**Table 19: Intention To Treat (ITT) and Complier Averaged Causal Effect (CACE) model estimates of treatment difference at each time point**

	ITT model		CACE model (minimum adherence)		CACE model (full adherence)	
	Mean difference (95% CI)*	p-value	Mean difference (95% CI) <sup>†</sup>	p-value	Mean difference (95% CI) <sup>†</sup>	p-value
<b>HIT-6</b>						
4 months	-0.9 (-1.88, -0.004)	0.049	-1.3 (-2.54, -0.02)	0.046	-1.5 (-3.08, -0.01)	0.048
8 months	0.09 (-0.93, 1.11)	0.860	0.07 (-1.19, 1.34)	0.910	0.09 (-1.42, 1.59)	0.910
12 months	-0.3 (-1.22, 0.66)	0.555	-0.4 (-1.66, 0.86)	0.533	-0.5 (-2.00, 1.03)	0.533

\*Based on a multi-level model adjusted for age, sex, headache type, geographical locality and baseline measure of the outcome. The intervention group was included as a random effect to account for partial clustering in one arm.

<sup>†</sup>Based on a single equation instrumental variable regression model with outcome adjusted for age, sex, headache type, geographical locality and baseline measure of the outcome.

Note: Compliance will be of two levels - Minimal compliance with the intervention is defined as the participant attending day 1 of the intervention plus the one-to-one session. Full compliance is defined as the participant attending both days, plus individualised contact with the nurse

**Table 20: Sub-group analyses of the 12-month HIT-6 outcome**

Subgroups	Standard care N; mean(sd)	Self-management N; mean(sd)	Treatment by subgroup Interaction effect (95% CI); p-value
<b>Anxiety</b>			
≤10	122; 58.8 (7.1)	153; 58.6 (6.5)	-0.2 (-2.02, 1.72); 0.875
>10	164; 61.9 (6.8)	150; 61.3 (7.3)	
<b>Depression</b>			
≤10	226; 60.3 (7.0)	239; 59.4 (7.0)	0.02 (-2.29, 2.34); 0.984
>10	60; 61.7 (7.2)	64; 62.1 (6.5)	
<b>Severity (HIT-6)</b>			
≤64	147; 57.4 (6.5)	172; 57.8 (5.9)	-1.7 (-3.72, 0.34); 0.102
>64	139; 64.0 (6.0)	131; 62.8 (7.4)	

**ADDITIONAL ANALYSES**

**Table 21: Treatment effectiveness estimates for the primary outcome (HIT-6 at 12 months) for each of the headache types**

Headache type	Standard care	Self-management	Adjusted mean difference (95% CI); p-value
<b>Definite chronic migraine</b>			
N	149	159	-0.7 (-1.97, 0.65); 0.325
Mean (SD)	62.7 (6.1)	61.4 (6.8)	
Median (IQR)	63 (60, 66)	62 (59, 66)	
Missing	0	0	
<b>Probable chronic migraine</b>			
N	133	141	-0.1 (-1.46, 1.35); 0.943
Mean (SD)	58.4 (7.3)	58.6 (6.7)	
Median (IQR)	60 (55, 63)	59 (54, 63)	
Missing	1	3	
<b>Chronic tension type headache</b>			
N	4	3	-5.5 (-17.0, 5.97); 0.347
Mean (SD)	53.5 (9.1)	48 (9.2)	
Median (IQR)	54.5 (46.5, 60.5)	50 (38, 56)	
Missing	0	0	

Note: Adjusted estimates used for definite and probable migraine. Unadjusted estimates used for chronic tension type headache due to there being a small number of participants.

**Table 24.1: Longitudinal analysis for the number of headache days summarised by treatment group**

	Unadjusted mean difference (95% CI); p-value	Adjusted mean difference (95% CI); p-value
On how many of the last 7 days have you had a headache, days	0.1 (-0.15, 0.43); 0.340	0.2 (-0.13, 0.44); 0.285
On the days you had a headache on average how long did they last, hours	0.2 (-0.68, 1.13); 0.624	0.3 (-0.54, 1.21); 0.456
On the days you had a headache on average how severe were they	0.2 (-0.08, 0.47); 0.171	0.2 (-0.08, 0.46); 0.163

**Table 22: Sensitivity analysis - treatment effectiveness estimate based on the primary outcome (at 12-month follow-up) having excluded those participants included in the process evaluation interviews**

	Standard care	Self-management	Estimate (95% CI); p-value
<b>HIT-6</b>			
N	277	286	-0.4 (-1.40, 0.53); 0.376
Mean (SD)	60.6 (7.1)	59.8 (7.0)	
Median (IQR)	62 (57, 65)	61 (55, 64)	
Missing	1	3	

**Table 23: Sensitivity analysis - treatment effectiveness estimate based on the primary outcome (at 12-month follow-up) having excluded those participants reporting less than 15 days of headache at baseline**

	Standard care	Self-management	Estimate (95% CI); p-value
<b>HIT-6</b>			
N	174	188	-0.2 (-1.43, 0.96); 0.696
Mean (SD)	60.8 (7.0)	60.5 (6.7)	
Median (IQR)	62 (57, 65)	62 (56, 65)	
Missing	0	1	

**SECTION 6 - ADVERSE EVENTS AND SERIOUS ADVERSE  
EVENTS**

Migraine & TTH



**Table 24: Adverse events (AE) and serious adverse events (SAE) summarised by treatment group**

	Standard care (N=356)	Self-management (N=380)	Total (N=736)
<b>AE's</b>			
Number of AE's reported	1 (0.3%)	6 (1.6%)	7 (1.0%)
<b>SAE's</b>			
Number of SAE's reported	2 (0.6%)	0	2 (0.3%)
<b>Reason Serious Adverse Event deemed serious</b>			
Death	2 (0.6%)	0	2 (0.3%)
Life-threatening	0	0	0
Hospitalisation or prolongation of existing hospitalisation	0	0	0
Persistent or significant disability or incapacity	0	0	0
Congenital anomaly/birth defect	0	0	0
Other	0	0	0
<b>SAE severity assessment</b>			
Mild	0	0	0
Moderate	0	0	0
Severe	0	0	0
Fatal/life threatening	2 (0.6%)	0	2 (0.3%)

**Table 25: Assessment of SAEs summarised by treatment group**

Assessment of SAE's	Standard care	Self-management	TOTAL
<b>SAE related to trial intervention:</b>			
Definitely	0	0	0
Probably	0	0	0
Possibly	0	0	0
Unlikely	0	0	0
Unrelated	2 (0.6%)	0	2 (0.3%)
<b>Expectedness of SAE:</b>			
Expected	0	0	0
Unexpected	0	0	0
Missing	2 (0.6%)	0	2 (0.3%)