

Erythema



NONE



MILD
Faintly detectable erythema: very light pink



MODERATE
Dull red, clearly distinguishable



SEVERE
Deep/dark red

Infiltration/Papulation



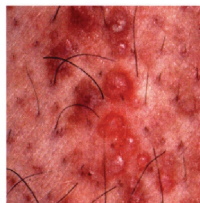
NONE



MILD
Barely perceptible elevation

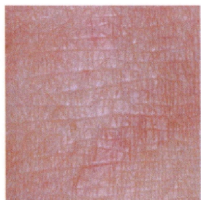


MODERATE
Clearly perceptible elevation but not extensive



SEVERE
Marked and extensive

Excoriations



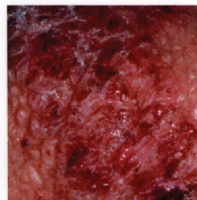
NONE



MILD
Scant evidence of excoriations with no signs of deeper skin damage (erosion, crust)



MODERATE
Several linear marks of skin with some showing evidence of deeper skin injury (erosion, crust)



SEVERE
Many erosive or crusty lesions

Lichenification



NONE



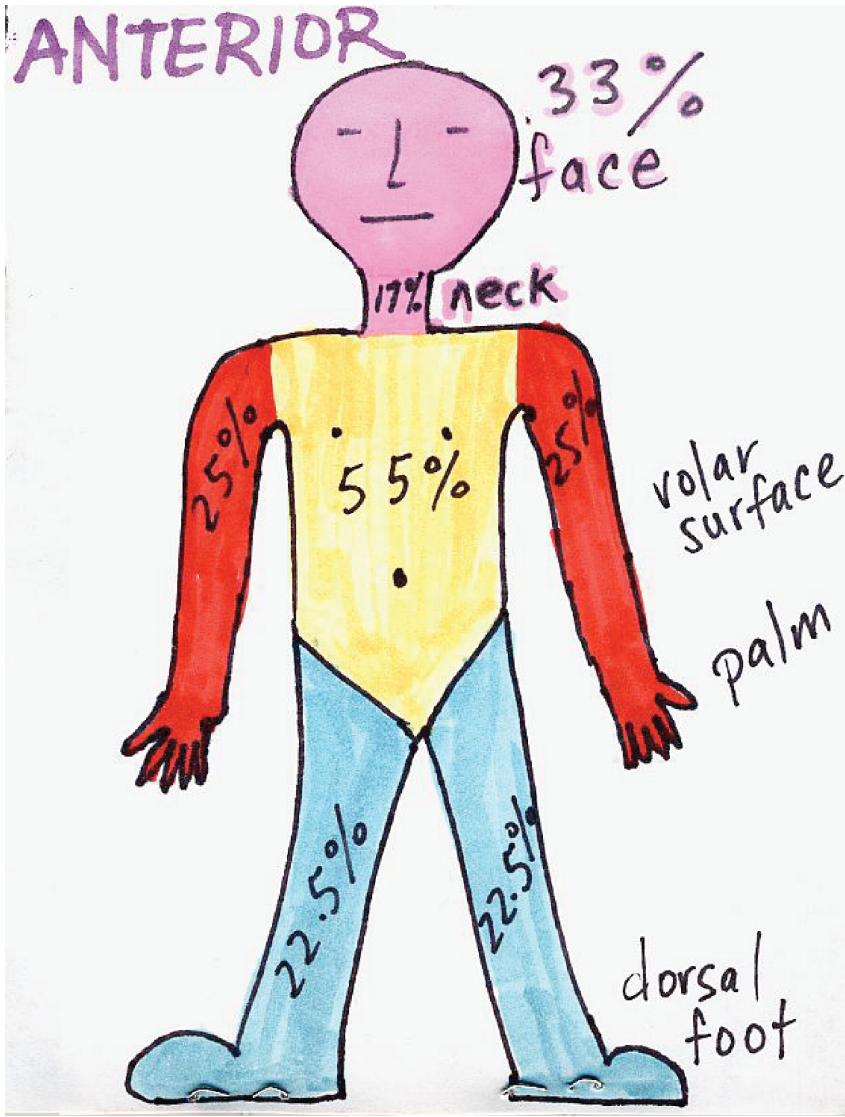
MILD
Slight thickening of the skin discernible only by touch and with skin markings minimally exaggerated



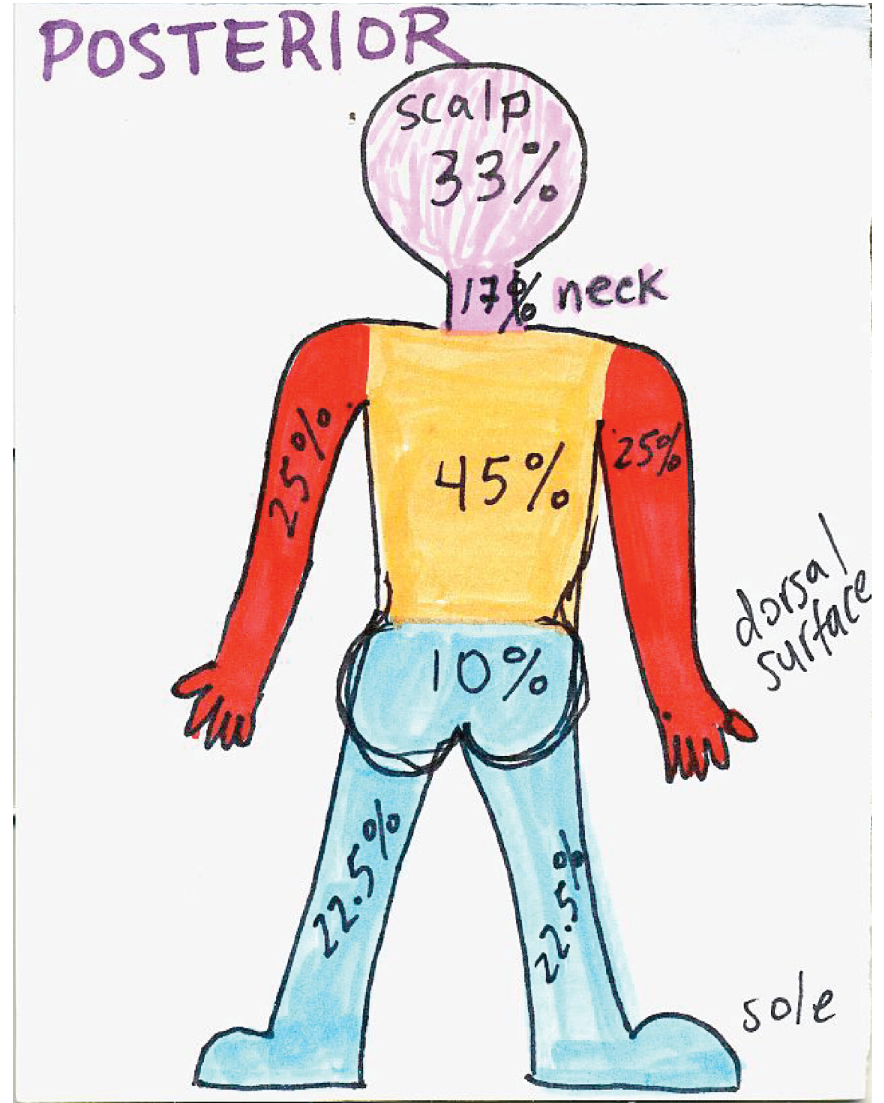
MODERATE
Definite thickening of the skin with skin markings exaggerated so that they form a visible criss-cross pattern



SEVERE
Thickened indurated skin with skin markings visibly portraying an exaggerated criss-cross pattern



Hand = 6% Hand and wrist = 10%



Typical pattern of eczema in skin crease = 4%