

# Newsletter

Welcome to the June issue of the BHiRCH newsletter.

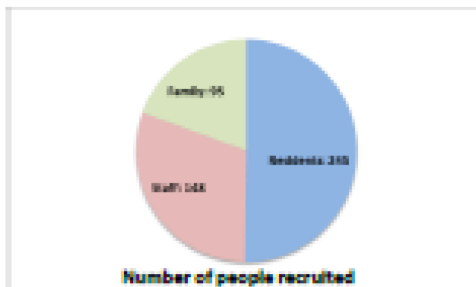
## A big thank you

Thanks to you we have recruited 488 individuals across 13 care homes.

We know this has been a whole care home effort – the people who signed up; the family who discussed the project with residents; staff who made introductions; and all the other staff who might have had to do a bit more while their colleagues were talking to our team.

We are also lucky to have continued support from our local National Institute for Health Research Clinical Research Networks (CRN).

The CRN is responsible for promoting and assisting with research in care homes, and their staff have been vital in helping us with recruitment of both care homes and individual residents.



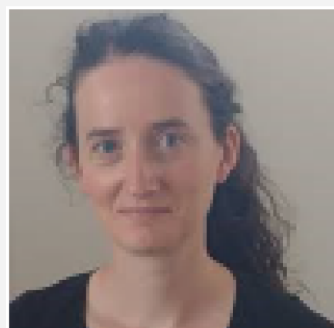
## Dr Barbara Woodward-Carlton awarded MBE



We're delighted that Dr Barbara Woodward-Carlton, Chair of the BHiRCH Yorkshire Carer Reference Panel and member of the Alzheimer's Society's Research Network, has been awarded an MBE in recognition of her services to patient and public involvement in furthering dementia research.

There are two Carer Reference Panels working on the BHiRCH project, composed of people who have or have had family members living in care homes. The panels provided valuable advice about the information sheets, letters and posters used to recruit residents, family members and staff to the Pilot Trial.

## Meet one of our researchers Dr Catherine Powell, University of Bradford



Dr Catherine Powell is a Research Fellow working on the BHIRCH project. Catherine is keen to improve quality of life for older people living in care homes, in the community, as well as support for their family members and professional care staff. She has previously been involved in research projects in these areas. Catherine has a PhD in Sociology and Social Policy from the University of Leeds, an MA in Social Research from the University of Leeds and a BA in Sociology and Social Policy from the University of York.

## What is happening now: Monthly visits

We will be in your home once or twice a month for the next 7 months. We have now completed four months' data collection and are preparing for our fifth. We have been collecting anonymous information about the care home in general, and information from resident records on:

- use of primary care services
- use of prescription medication

## Another big thank you

We are sorry to have said goodbye to our Research Programme Manager, Dr Alan Blighe, who steered us to such great success so far. Alan played a vital role in overseeing the many aspects of our project. We wish him well in his new job with NHS England.

## Any questions? Get in touch

**Professor Numa Downs, Principal Investigator**

Tel. [REDACTED] / Email [REDACTED]

**Penny Cadden, Project Administrator**

Tel. [REDACTED] / Email [REDACTED]

[www.bradford.ac.uk/bhirch](http://www.bradford.ac.uk/bhirch)  [@BHIRCHCareHomes](https://twitter.com/BHIRCHCareHomes)

This newsletter reflects independent research funded by the National Institute for Health Research (NIHR) under its Programme Grants for Applied Research Programme (Reference Number RP-PG-0612-20010). The views expressed are those of the author(s) and not necessarily those of the NIHR, the NIHR or the Department of Health.

